

INSPIRED LIVING

COLLECTION

STATESMAN
HOMES

ARCHITECT DESIGNED HOMES WITHOUT THE PREMIUM PRICE TAG

Driven by design, crafted by experience, and inspired by the way you want to live, our Inspired Living Collection puts expert architect and interior design, uncompromising quality and affordable pricing within your reach.



Why shouldn't a home designed by a top architect be affordable and within your reach? It is with our Inspired Living Collection.

Well-designed spaces positively impact our lives and well-being, which is why we've collaborated with leading architects to create spaces that feel beautiful and are practical to live in with everything you expect in a contemporary home. Our expertise covers the entire building journey, including building design, interior design, and construction delivery, so you have the confidence you'll get an exceptional, quality-built home without the premium price tag.



MEET ONE OF OUR ARCHITECTS



FRANCESCO BONATO

Growing up in an architecturally rich suburb in Adelaide's east, award-winning architect Francesco (Fran) Bonato has a deeply personal connection to the new house designs he has now created for Statesman Homes.

Fran's father, a Venetian furniture maker who emigrated from Italy in the late 1950s, was so impressed with the architectural quality of a house he was working on as a contractor that he commissioned the builder, a young Alan Hickinbotham, to build him a new family home in the mid-1960s in the same street.

"Getting good design to the people, that was the philosophy all those years ago and it's still the same today," Fran explains of his work with Statesman Homes. "The fact is my whole path to architecture as a career was influenced by growing up in that environment, growing up in a well-built home in Athelstone. It was a traditional suburban environment, but the design of the homes showed an impressionable young teenage lad that a different world was possible."

Fran has more than 45 years of experience in architecture, including in his own architectural practice, Tectvs, which he founded 35 years ago. Fran graduated with Honours from the University of Adelaide, where he is also an Adjunct Associate Professor and completing a PhD. He is a Life Fellow of the Australian Institute of Architects, and a recipient of its highest honour in South Australia, the Sir James Irwin President's Medal.

At Tectvs, he has worked extensively across a range of projects, specialising in private homes, townhouses, apartments and furniture, as well as commercial projects such as wineries and restaurants. His clients are local, national and international and he has studios in both Adelaide and Melbourne. Fran is also involved in two passion projects in central-east Italy, where he is assisting in the restoration of a 15th-century house and replacing an old bell tower destroyed during a landslide triggered by an earthquake in the 1960s.

For his range of new house designs for Statesman Homes, Fran says he's been inspired by his family's original Athelstone home and the Flinders Ranges landscape, a quintessential part of South Australia. "I'm used to designing compact living spaces with a high level of efficiency and complexity. When it comes to designing apartments, every centimetre counts. We've adopted some of those elements into a traditional, free-standing house design. I wanted to capture that less tangible, sensory experience that many people inadvertently have when they walk into a well-designed home, a calming effect."



The Inspired Living Difference

We streamline your home-building experience and transform your dreams into a lifestyle. Our home designs and features have been expertly curated by our architects and interior designers. Our scale, volume and wealth of building experience ensure your upfront pricing stays affordable.

Innovative Design

Every home in our Inspired Living Collection is architecturally designed to bring you the very best in contemporary designer living minus the premium price tag. After decades of building homes for South Australians, we understand how to balance design excellence with meticulous craftsmanship and affordability.

Inclusive Pricing

What others call extras are standard right from the start. Every home in the Inspired Living Collection is packed with value: 2.7m ceilings and 2340mm doors throughout, auto-remote panel-lift garage door, impressive kitchen with 900mm appliances and designer solid benchtops, soft-close joinery drawers and doors, master bedrooms to fit king-size beds, walk-in robes and a luxury bathroom plus so much more.

In Reach

There is a home to suit every budget in the Inspired Living Collection. Our architects, engineers, interior designers and suppliers have collaborated on each design, delivering economical solutions without compromising the design quality. This approach allows Statesman Homes to create an architecturally designed collection at an affordable price.

Inspired Living Features

GOOD DESIGN

Using the principles of good design, the Inspired Living Collection is simple and timeless. All designs ensure there's good flow throughout your home with no wasted space. Furniture placement is considered and realistically sized, for example our master suites are designed around king beds and couches and tables are drawn to scale, so you know the floorplans deliver on their spacing promise.

VALUE PACKED

Our designs are packed with value, complete with features that others view as an upgrade. You can expect 2.7m high ceilings, panel-lift garage doors, 25-degree roof pitch, designer solid kitchen benchtops, and luxurious bathrooms - these are standard with all Inspired Living designs.

QUALITY INCLUSIONS

All our designs have impressive fixtures and fittings that combine style and functionality. We thoughtfully select the products we use to ensure their quality, longevity and affordability.

PRACTICAL FEATURES

It's the little things that often make the biggest difference. Built-in storage solutions, low-maintenance materials, mud rooms, butler's pantries, the use of natural light and cross-flow ventilation - it's these thoughtful features that will make living so much easier in your new home.

ENERGY EFFICIENCY

All designs in the Inspired Living Collection have been energy assessed with premium insulation for all external walls, including batts with foil wrap to reduce heat loss and heat gain.

SMART HOME TECHNOLOGY

Our Pinnacle inclusions incorporate smart home features such as a central tablet compatible with Google Assistant and Amazon Alexa to control functionality. Heating and cooling are remotely controlled along with video doorbell and garage door. Security system, NBN-ready provisions, Google Nest Hub Max and Nest Wi-fi provide connectivity and security.

STREET APPEAL

Just as important as the interior, the exterior elevation of your new home deserves a contemporary and stylish aesthetic to maximise its street appeal. Our range of architecturally designed elevations complement all plans in our new collection and will generate visual interest with layered textures, colour and decorative features.

WE NEGOTIATE, YOU SAVE

We achieve cost savings through purchasing products and materials in bulk. We negotiate with our suppliers for the best prices and savings, which we pass on to you in the base price.





Choose your inclusions

We've curated three levels of inclusions for the Inspired Living Collection - Freedom, Trend and Pinnacle, achieving unrivalled quality and a contemporary style that works seamlessly throughout each home.

Our architects and interior designers have curated a high-end selection of inclusions that complement our home designs. It takes the guesswork out of choosing your fixtures and fittings. We are transparent in presenting the design and inclusions upfront, so you know what you get before we even start discussing your project and before making any commitments.

FREEDOM

Freedom is our entry level home inclusions with amazing features but with the added freedom to source your own flooring.

- 2.7m high ceilings and 2340mm high doors
- Garages with auto remote panel-lift door
- Impressive kitchens with 900mm appliances, designer solid benchtops, undermount kitchen sink, overhead cupboards, stainless steel dishwasher and plumbed water point for fridge
- Stunning bathroom and ensuite upgrades including tiled ledges in showers and semi-framed shower screens*
- Soft close joinery drawers and doors throughout
- Laundries, stores and mud rooms with joinery included
- Well placed double powerpoints for convenient access
- Space saving double wall cavity sliding doors
- Plus more!

TREND

Trend has all the benefits of the Freedom inclusions but with added features.

- Ducted reverse cycle air-conditioning with wifi controller
- On-trend timber-style flooring to front entry, rear hallway, family, kitchen and meals
- Quality carpet to bedrooms, study and home theatres
- Retractable sink mixer
- Full height tiling in bathrooms and ensuites with 1200mm high tiling to separate WC/vanities
- Security screen doors
- Plus more!

PINNACLE

Matching Freedom and Trend, Pinnacle also includes cutting-edge specifications and exclusive features for the ultimate modern experience.

- Designer solid island benchtop with slab-ends
- 609L French-door plumbed refrigerator
- Luxury bathrooms and ensuites with designer solid benchtops, semi-frameless shower screens and pill shaped bathroom mirrors
- Downlights throughout
- 3 coat paint system
- Integrated smart home technology such as a central tablet to control heating and cooling, video doorbell and garage door. Security system, NBN ready provisions, Google Nest Hub Max and Nest Wi-Fi, all providing unparalleled connectivity and security
- Plus more!

* The Elysian design features walk-in ensuite shower. Please note the full suite of inclusions are not applicable to all designs. Ask your sales consultant for more information.

The Inspired Living Collection

9M+ WIDE BLOCK DESIGNS

- 14 ___ Brio 3.5
- 15 ___ Brio 5
- 16 ___ Como 3.5
- 17 ___ Como 5
- 18 ___ Milani 3.5
- 19 ___ Milani 5
- 20 ___ Senso 3.5
- 21 ___ Senso 5
- 22 ___ Soli 3.5
- 23 ___ Soli 5

12.5M WIDE BLOCK DESIGNS

- 26 ___ Aliro 3.5
- 27 ___ Aliro 5
- 28 ___ Dulcet 3.5
- 29 ___ Dulcet 5
- 30 ___ Halcyon 3.5
- 31 ___ Halcyon 5
- 32 ___ Maxim 3.5
- 33 ___ Maxim 5
- 34 ___ Sanctuary 3.5
- 35 ___ Sanctuary 5
- 36 ___ Umbra 3.5
- 37 ___ Umbra 5
- 38 ___ Zephyr 3.5
- 39 ___ Zephyr 5

14M+ WIDE BLOCK DESIGNS

- 42 ___ Elysian 3.5
- 43 ___ Elysian 5
- 44 ___ Lumo 3.5
- 45 ___ Lumo 5
- 46 ___ Lyra 3.5
- 47 ___ Lyra 5
- 48 ___ Opal 3.5
- 49 ___ Opal 5
- 50 ___ Vestige 3.5
- 51 ___ Vestige 5

16M+ WIDE BLOCK DESIGNS

- 54 ___ Azure 3.5
- 55 ___ Azure 5
- 56 ___ Lune 3.5
- 57 ___ Lune 5
- 58 ___ Mira 3.5
- 59 ___ Mira 5
- 60 ___ Muse 3.5
- 61 ___ Muse 5
- 62 ___ Pura 3.5
- 63 ___ Pura 5

EXTRA WIDE BLOCK DESIGN

- 65 ___ Halo



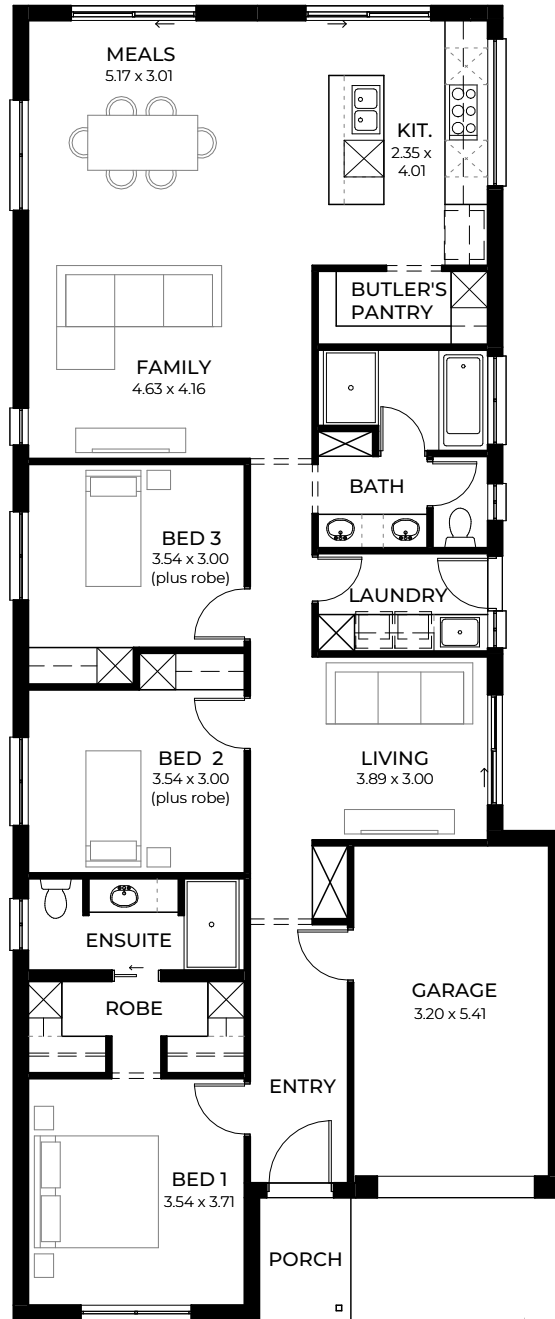


DESIGNS TO SUIT

9m+ Wide Blocks

Remarkably spacious and low maintenance, our compact home designs are perfect for first-time home buyers, empty nesters and investors. Be captivated by the free-flowing layout and smart design features, airy open-plan living areas and master-suite privacy, which combine to become the perfect solution for comfortable and contemporary living.

BRIO_3.5



For blocks with a 3.5m set back

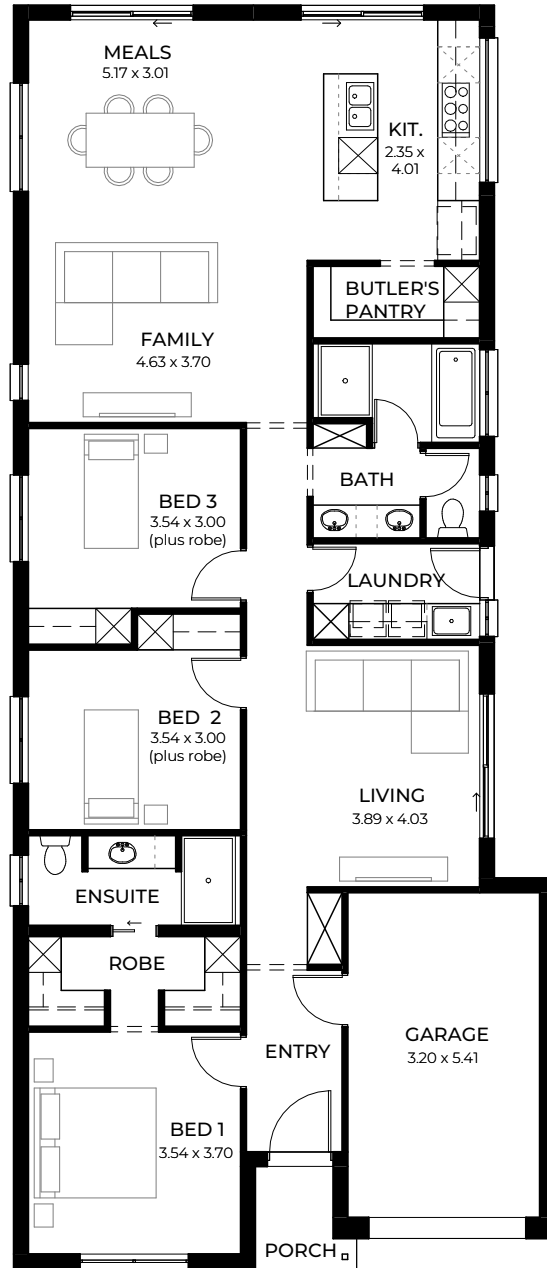


Everything you could possibly want in an innovative and modern three-bedroom home with airy open-plan living, stylish walk-in robe, three-way main bathroom and all-important entertainer kitchen.

LIVING	149.96m ²
PORCH	3m ²
GARAGE	20.08m ²
WIDTH	9m (incl. garage)
DEPTH	21.50m
TOTAL	173.04m ² / 18.62 sqs

These floorplans, images and facades are for illustration purposes only. All room sizes are approximate. Unauthorised use of these plans constitutes a breach of copyright which may make you personally liable for damages. The industry standard is 20% of the contract sum. E&OE

BRIO_5



For blocks with a 5m set back



No space is wasted in our Brio design with its thoughtful layout. Designed around the way you want to live with light-filled rooms and spacious open-plan living.

LIVING	150.29m ²
PORCH	2.41m ²
GARAGE	20.40m ²
WIDTH	9m (incl. garage)
DEPTH	21.03m
TOTAL	173.10m ² / 18.63 sqs

These floorplans, images and facades are for illustration purposes only. All room sizes are approximate. Unauthorised use of these plans constitutes a breach of copyright which may make you personally liable for damages. The industry standard is 20% of the contract sum. E&OE

COMO_3.5



For blocks with a 3.5m set back

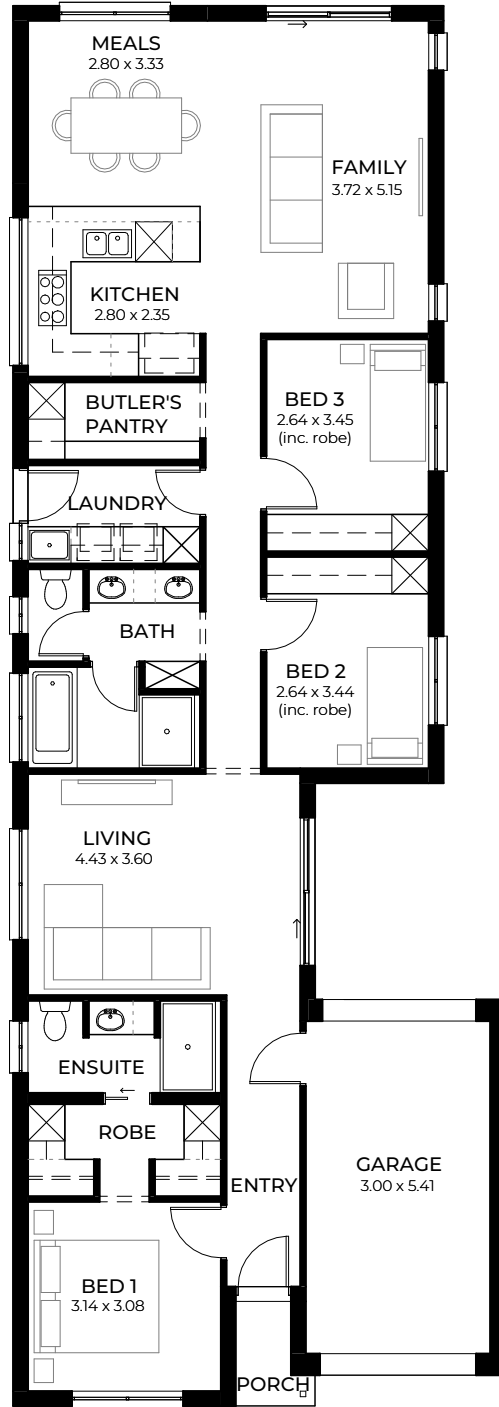


A flexible second lounge area, sizeable laundry, butler's pantry and stylish master-ensuite retreat are part of the Como's clever design with every modern feature imaginable.

LIVING	135.40m ²
PORCH	2.38m ²
GARAGE	19.79m ²
WIDTH	8m (incl. garage)
DEPTH	22.95m
TOTAL	157.57m ² / 16.96 sqs

These floorplans, images and facades are for illustration purposes only. All room sizes are approximate. Unauthorised use of these plans constitutes a breach of copyright which may make you personally liable for damages. The industry standard is 20% of the contract sum. E&OE

COMO_5



For blocks with a 5m set back

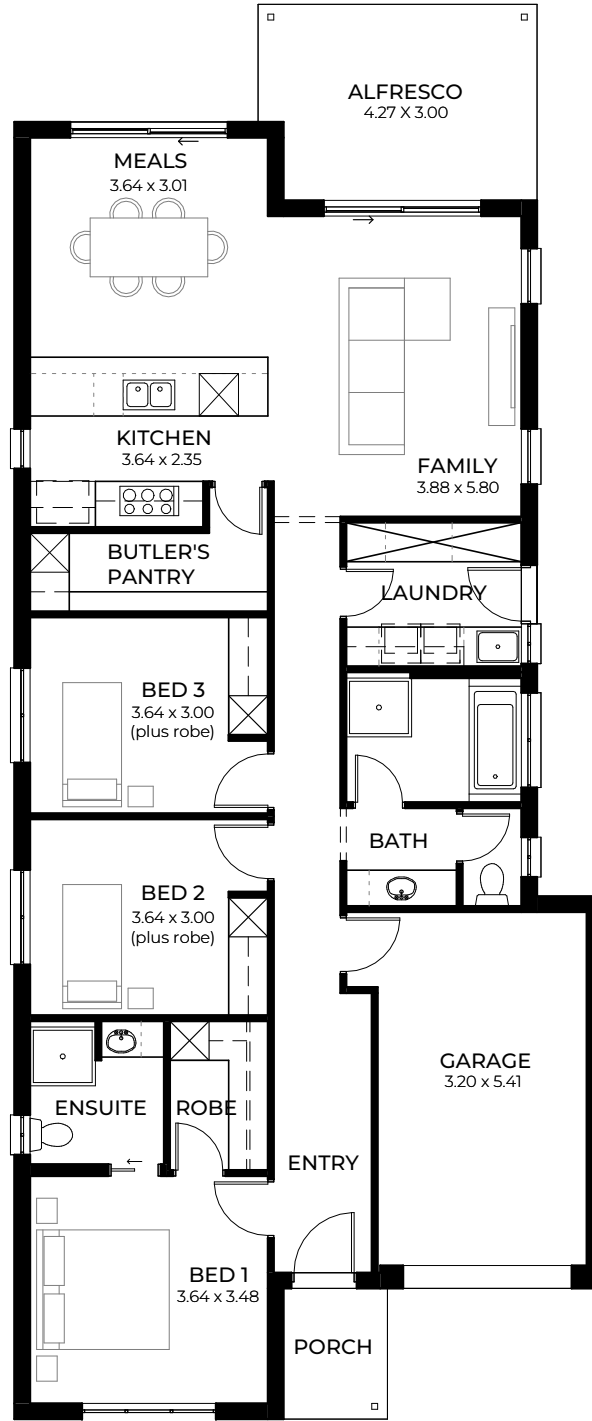


Dressing will be a dream in the Como's walk-through double robe in the master suite.

LIVING	135.27m ²
PORCH	1.73m ²
GARAGE	20.10m ²
WIDTH	8m (incl. garage)
DEPTH	22.70m
TOTAL	157.10m ² / 16.91 sqs

These floorplans, images and facades are for illustration purposes only. All room sizes are approximate. Unauthorised use of these plans constitutes a breach of copyright which may make you personally liable for damages. The industry standard is 20% of the contract sum. E&OE

MILANI 3.5



For blocks with a 3.5m set back

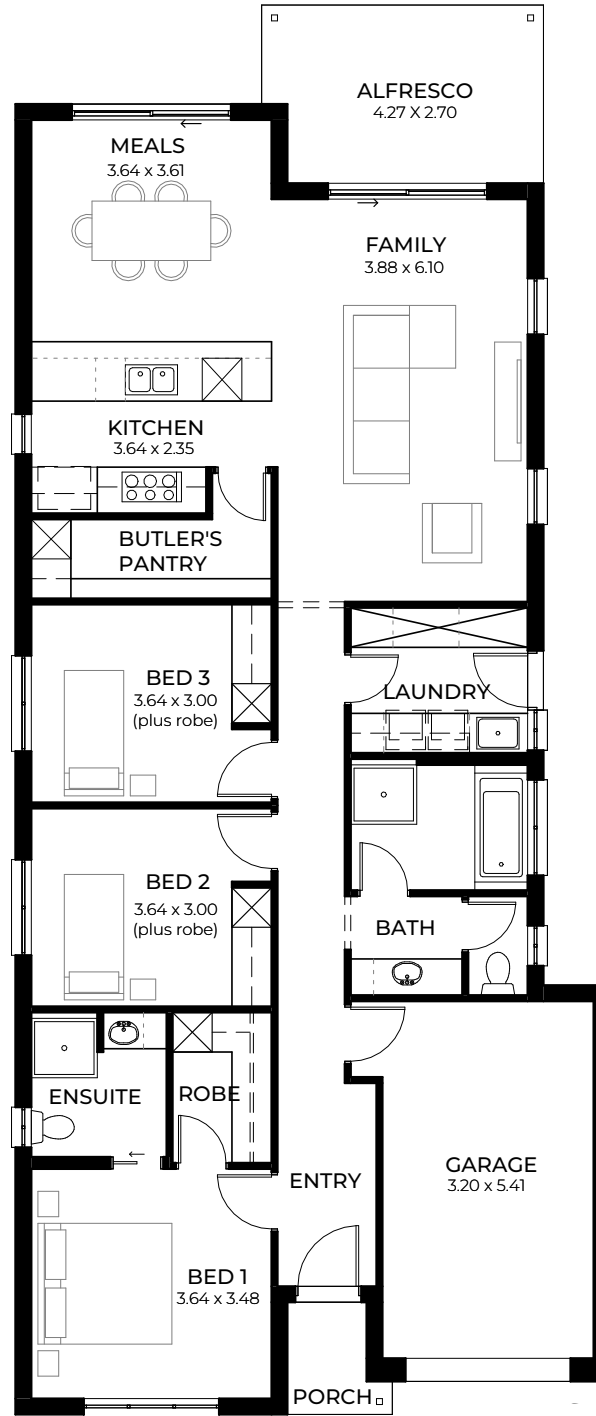


A super-size laundry and indoor-outdoor alfresco entertaining are sure to appeal to an active and growing family in the three-bedroom Milani.

LIVING	131.73m ²
PORCH	3.18m ²
ALFRESCO	12.34m ²
GARAGE	20.66m ²
WIDTH	9m (incl. garage)
DEPTH	21.65m
TOTAL	167.91m ² / 18.07 sqs

These floorplans, images and facades are for illustration purposes only. All room sizes are approximate. Unauthorised use of these plans constitutes a breach of copyright which may make you personally liable for damages. The industry standard is 20% of the contract sum. E&OE

MILANI_5



For blocks with a 5m set back

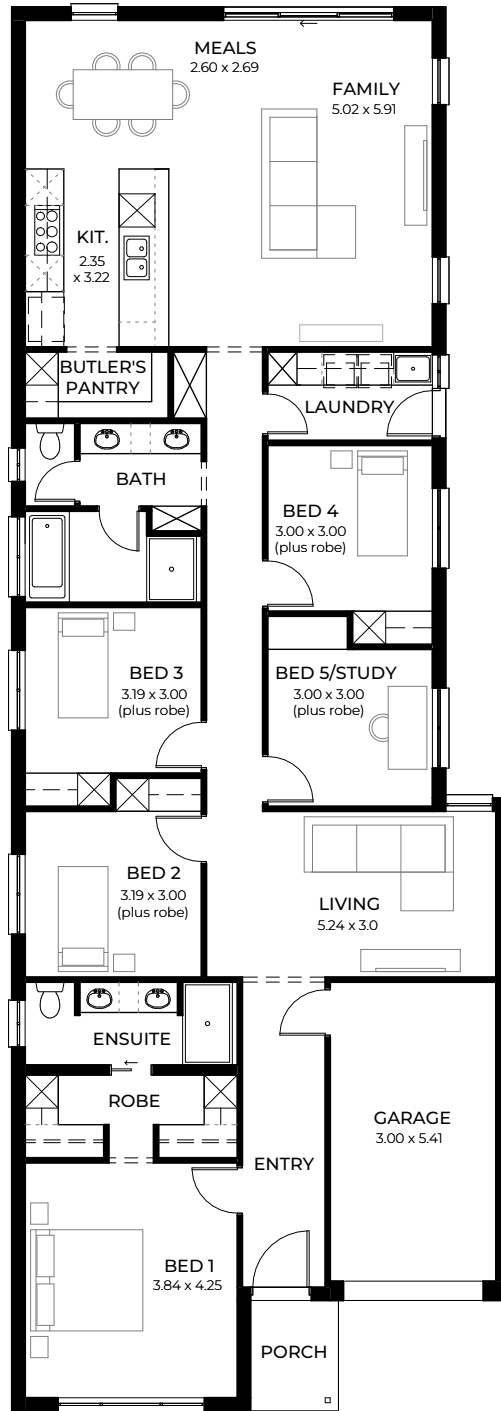


It's the little things that make a big difference, such as roomy built-in robes in all bedrooms.

LIVING	135.81m ²
PORCH	2.24m ²
ALFRESCO	11.06m ²
GARAGE	20.95m ²
WIDTH	9m (incl. garage)
DEPTH	21.35m
TOTAL	170.06m ² / 18.30 sqs

These floorplans, images and facades are for illustration purposes only. All room sizes are approximate. Unauthorised use of these plans constitutes a breach of copyright which may make you personally liable for damages. The industry standard is 20% of the contract sum. E&OE

SENSO_3.5



For blocks with a 3.5m set back

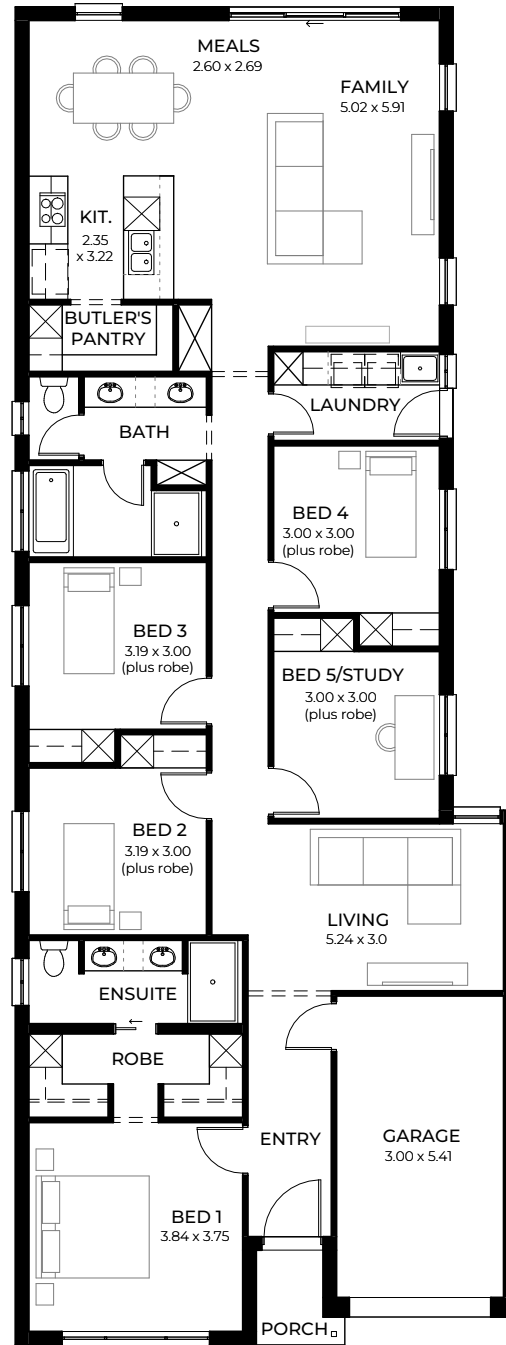


A flexible home office/study is an optional fifth bedroom or guest room in the remarkably spacious and low-maintenance Senso.

LIVING	184.12m ²
PORCH	3.18m ²
GARAGE	18.66m ²
WIDTH	9m (incl. garage)
DEPTH	25.40m
TOTAL	205.96m ² / 22.16 sqs

These floorplans, images and facades are for illustration purposes only. All room sizes are approximate. Unauthorised use of these plans constitutes a breach of copyright which may make you personally liable for damages. The industry standard is 20% of the contract sum. E&OE

SENSO_5



For blocks with a 5m set back

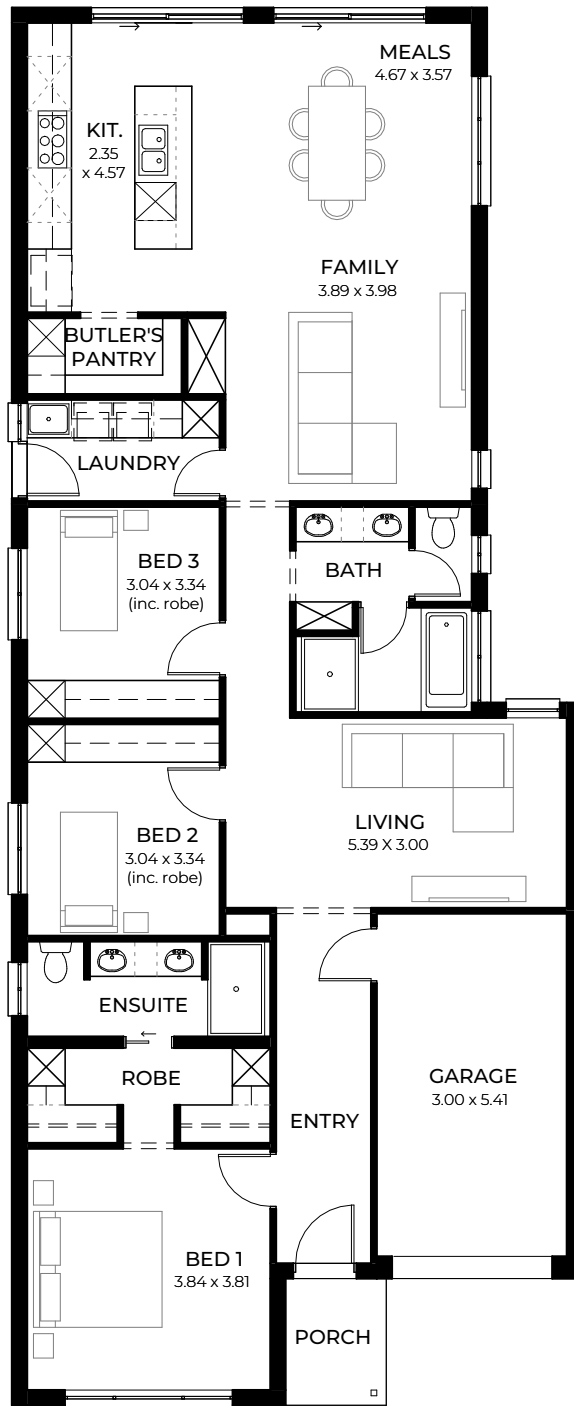


This generous and well-proportioned design with multiple living areas will create an address everyone will love coming home to.

LIVING	176.67m ²
PORCH	2.24m ²
GARAGE	18.98m ²
WIDTH	9m (incl. garage)
DEPTH	24m
TOTAL	197.89m ² / 21.30 sqs

These floorplans, images and facades are for illustration purposes only. All room sizes are approximate. Unauthorised use of these plans constitutes a breach of copyright which may make you personally liable for damages. The industry standard is 20% of the contract sum. E&OE

SOLI_3.5



For blocks with a 3.5m set back

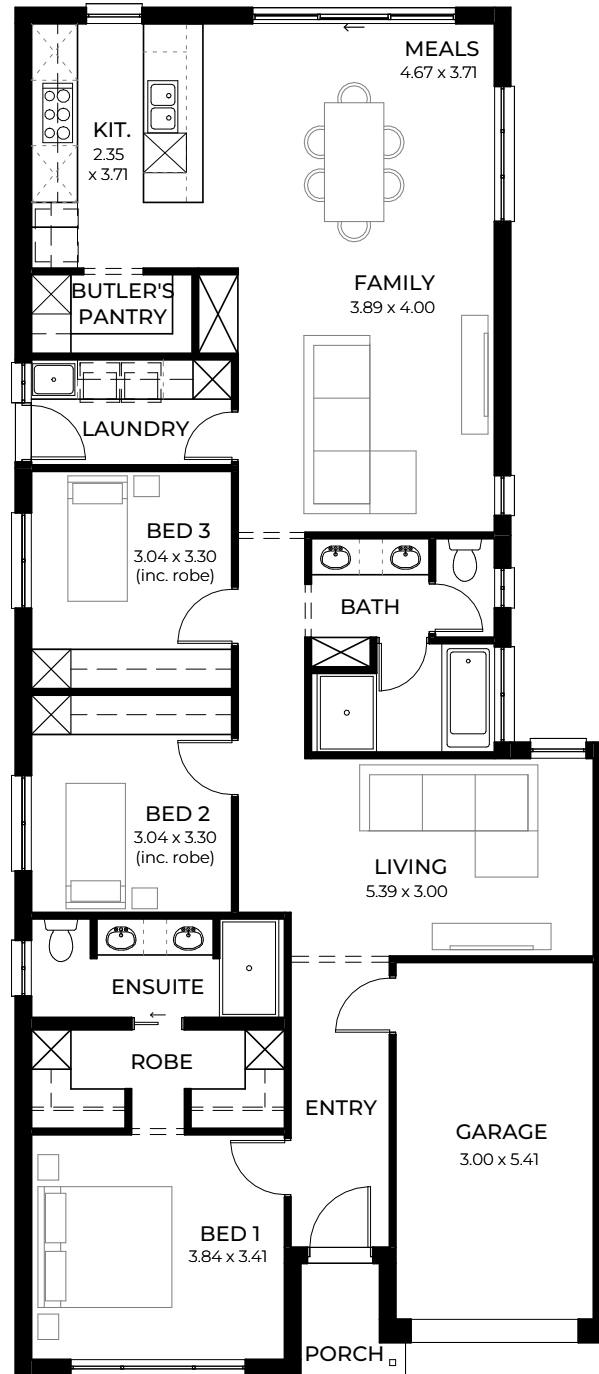


With two living areas, a designer kitchen, a large butler's pantry and convenient three-way access to the main bathroom, the Soli packs a designer punch.

LIVING	154.06m ²
PORCH	3.18m ²
GARAGE	18.66m ²
WIDTH	9m (incl. garage)
DEPTH	22.06m
TOTAL	175.90m ² / 18.93 sqs

These floorplans, images and facades are for illustration purposes only. All room sizes are approximate. Unauthorised use of these plans constitutes a breach of copyright which may make you personally liable for damages. The industry standard is 20% of the contract sum. E&OE

SOLI_5



For blocks with a 5m set back



A generous walk-through double robe in the master suite leads to a luxurious bathroom with a walk-in shower and double vanity.

LIVING	147.05m ²
PORCH	2.24m ²
GARAGE	18.95m ²
WIDTH	9m (incl. garage)
DEPTH	22.72m
TOTAL	168.24m ² / 18.10 sqs

These floorplans, images and facades are for illustration purposes only. All room sizes are approximate. Unauthorised use of these plans constitutes a breach of copyright which may make you personally liable for damages. The industry standard is 20% of the contract sum. E&OE



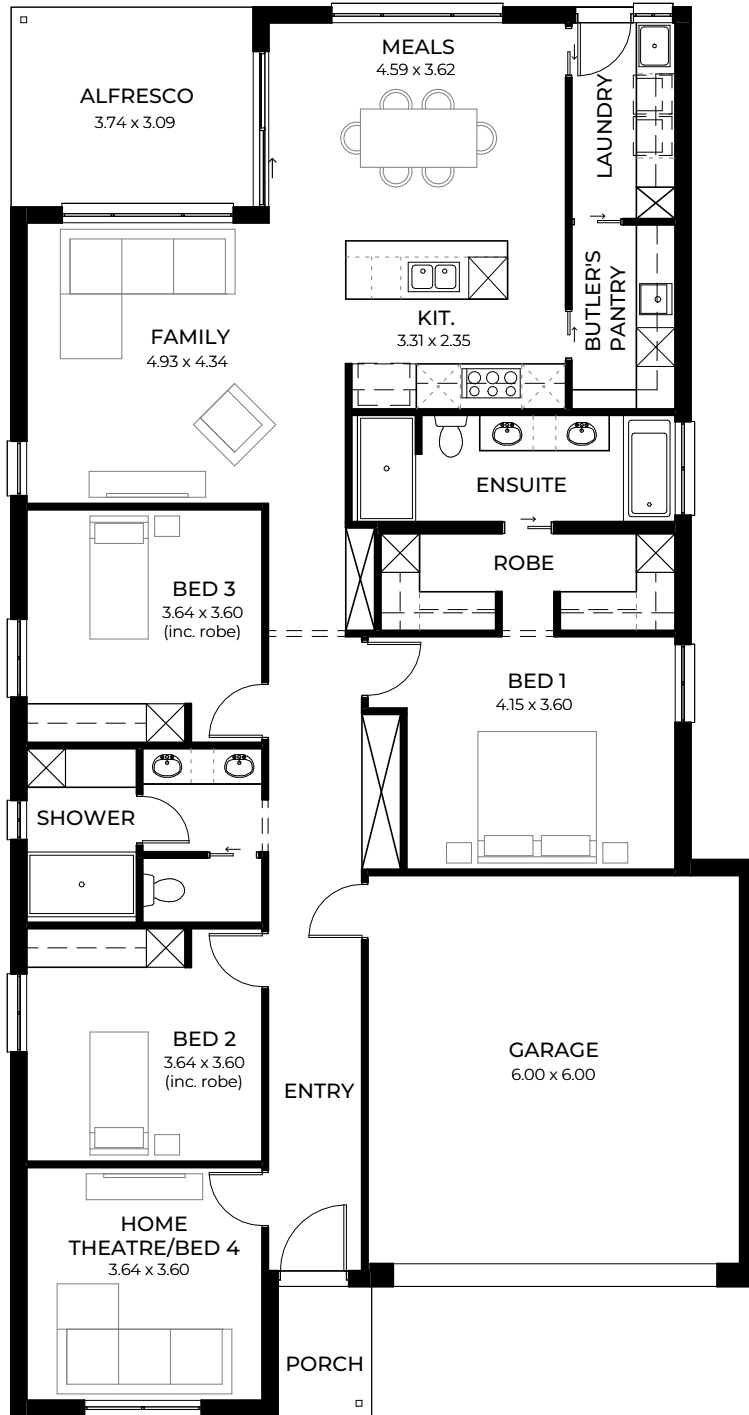


DESIGNS TO SUIT

12.5m Wide Blocks

Enjoy the best of both worlds: low-maintenance living with smart designs that grow and adapt to your family's lifestyle. Our spacious designs include a home theatre that could start life as a playroom or rumpus room, a butler's pantry off your generous kitchen and open-plan living area and a walk-through robe in the master ensuite retreat.

ALIRO 3.5



Suits
masterplanned
estates and deep
infill blocks

For blocks with a 3.5m set back

2 3 2 2

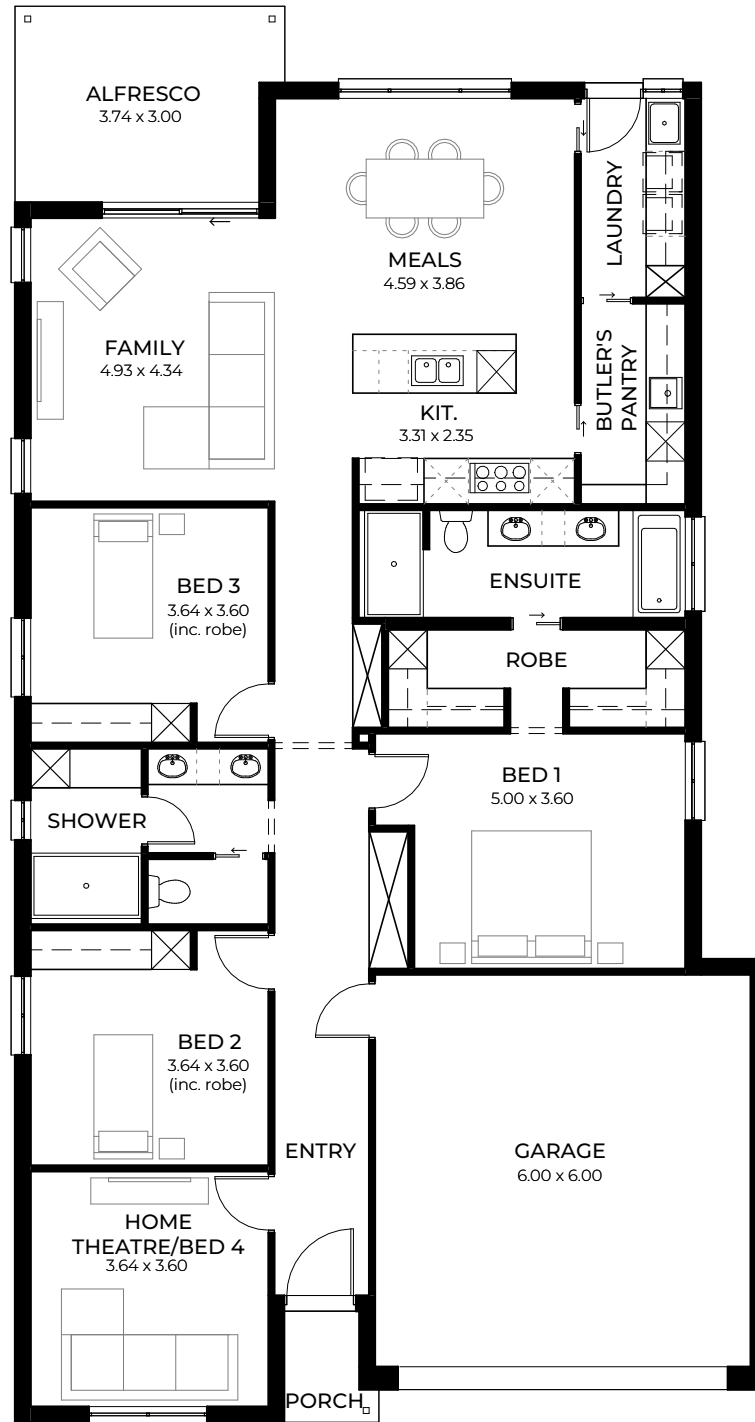
Designed by award-winning architect Francesco Bonato

Aliro is perfectly suited to the discerning homeowner or empty nester with the spacious master, a tranquil retreat set away from street noise.

LIVING	172.45m ²
PORCH	2.90m ²
ALFRESCO	11.56m ²
GARAGE	38.31m ²
WIDTH	11.50m (incl. garage)
DEPTH	21.76m
TOTAL	225.22m ² / 24.24 sqs

These floorplans, images and facades are for illustration purposes only. All room sizes are approximate. Unauthorised use of these plans constitutes a breach of copyright which may make you personally liable for damages. The industry standard is 20% of the contract sum. E&OE

ALIRO_5



Suits masterplanned estates and deep infill blocks

For blocks with a 5m set back

2 3 2 2

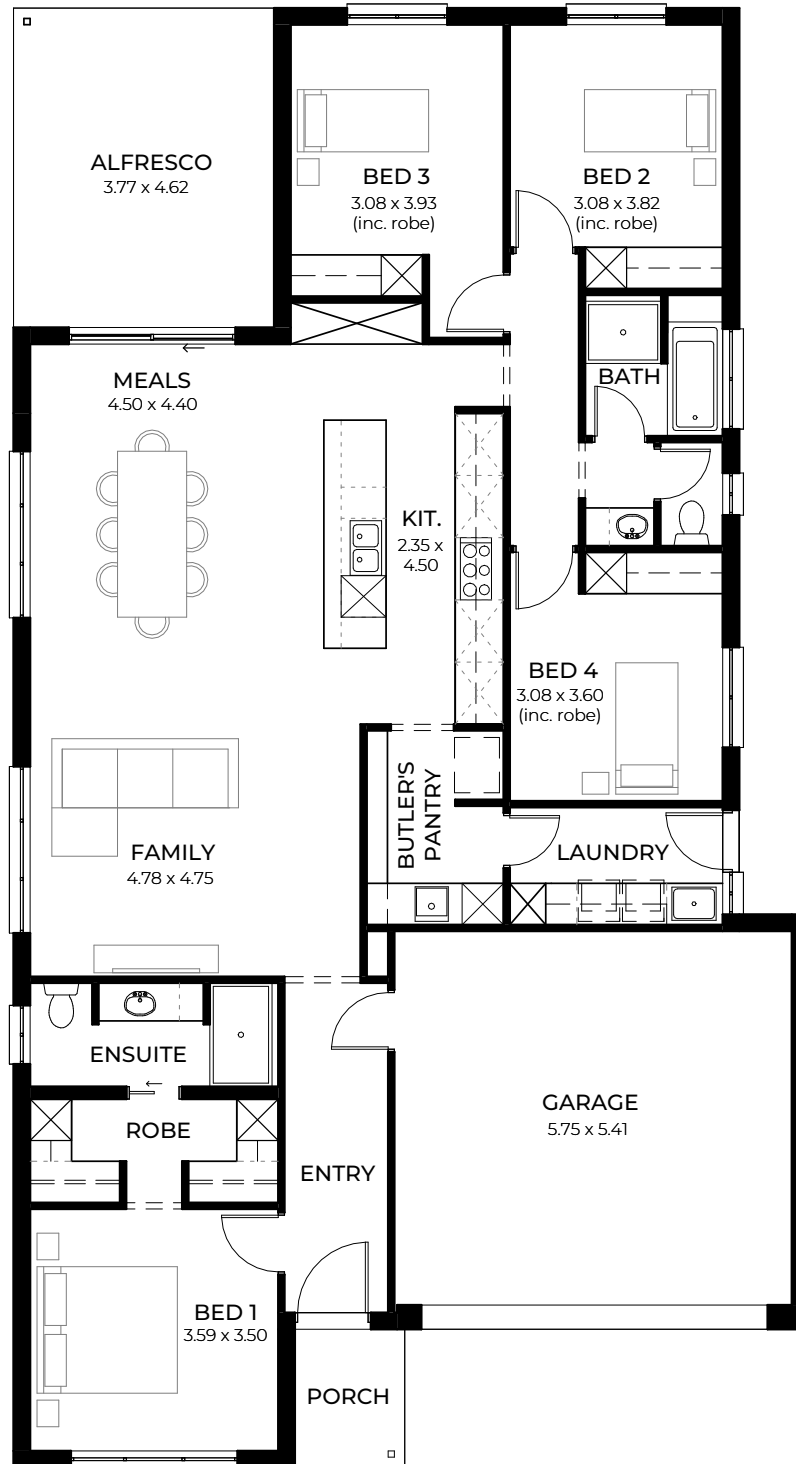
Designed by award-winning architect Francesco Bonato

Unwind at the end of the day with a relaxing bath in this luxurious ensuite or enjoy cooking dinner in this designer kitchen while chatting to family chilling out in the beautifully designed casual living zones.

LIVING	172.10m ²
PORCH	2.11m ²
ALFRESCO	11.68m ²
GARAGE	38.31m ²
WIDTH	11.50m (incl. garage)
DEPTH	21.67m
TOTAL	224.20m ² / 24.13 sqs

These floorplans, images and facades are for illustration purposes only. All room sizes are approximate. Unauthorised use of these plans constitutes a breach of copyright which may make you personally liable for damages. The industry standard is 20% of the contract sum. E&OE

DULCET 3.5



For blocks with a 3.5m set back

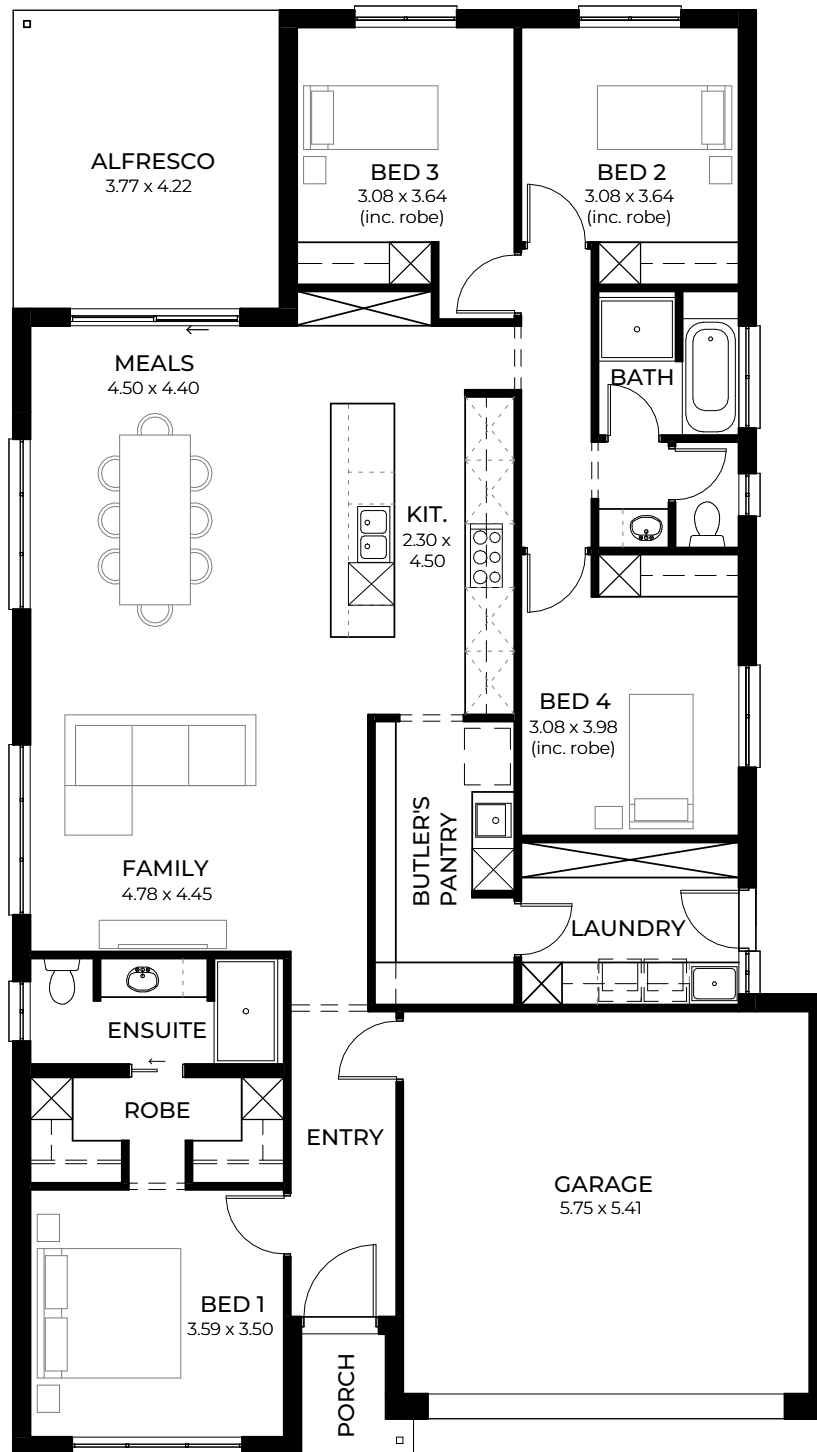


Family life is at the heart of the Dulcet, with its central and light-filled open-plan kitchen and dining that opens to a generous alfresco area. A clever butler's pantry hides the fridge and creates more bench space in the designer kitchen.

LIVING	162.61m ²
PORCH	3.18m ²
ALFRESCO	17.42m ²
GARAGE	34.77m ²
WIDTH	11.50m (incl. garage)
DEPTH	21.11m
TOTAL	217.98m ² / 23.46 sqs

These floorplans, images and facades are for illustration purposes only. All room sizes are approximate. Unauthorised use of these plans constitutes a breach of copyright which may make you personally liable for damages. The industry standard is 20% of the contract sum. E&OE

DULCET_5



For blocks with a 5m set back

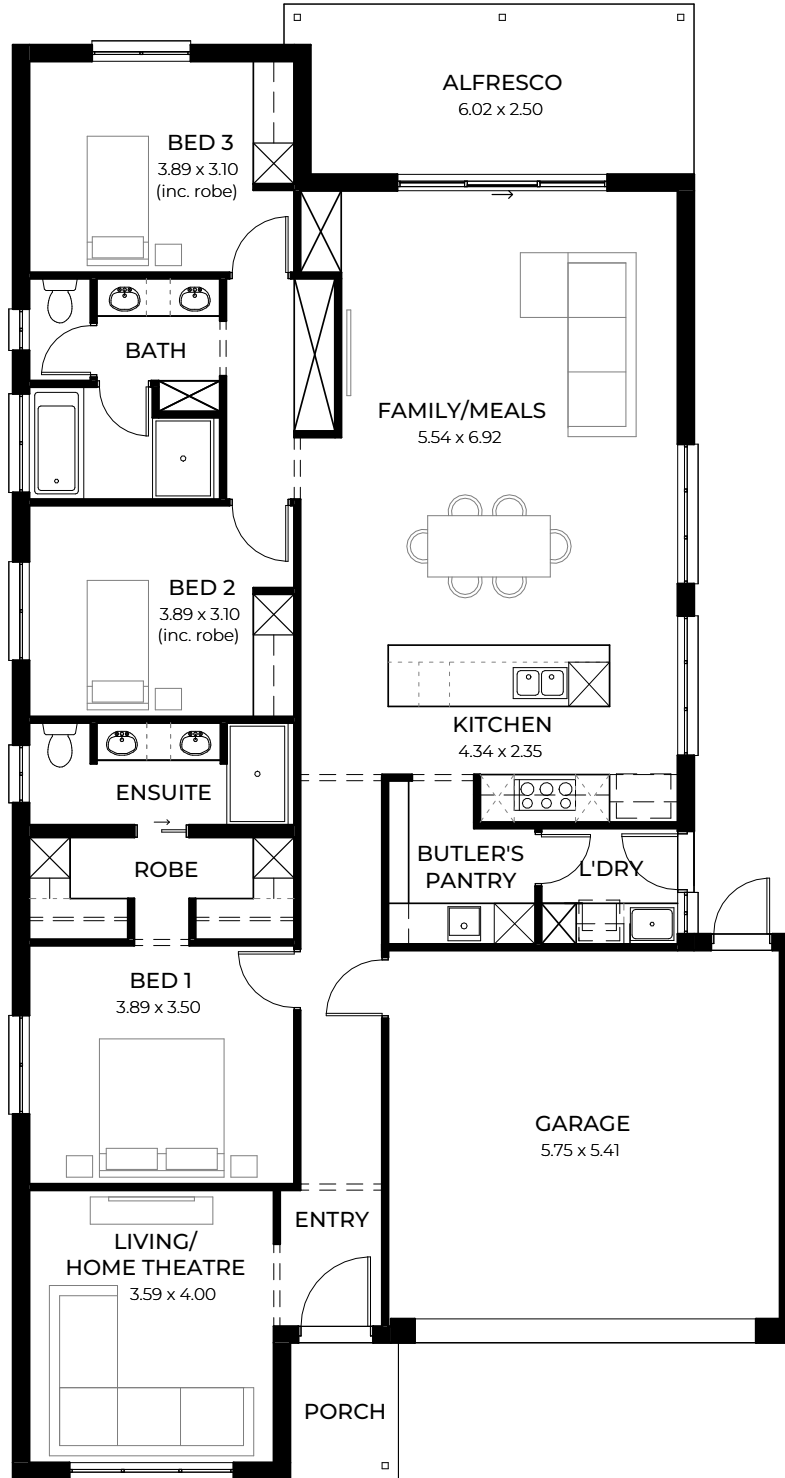


Bedrooms are housed in separate wings with a luxurious master ensuite plus loads of storage space in the laundry pod.

LIVING	164.65m ²
PORCH	2.24m ²
ALFRESCO	15.91m ²
GARAGE	35.09m ²
WIDTH	11.50m (incl. garage)
DEPTH	20.41m
TOTAL	217.89m ² / 23.45 sqs

These floorplans, images and facades are for illustration purposes only. All room sizes are approximate. Unauthorised use of these plans constitutes a breach of copyright which may make you personally liable for damages. The industry standard is 20% of the contract sum. E&OE

HALYCON 3.5



For blocks with a 3.5m set back

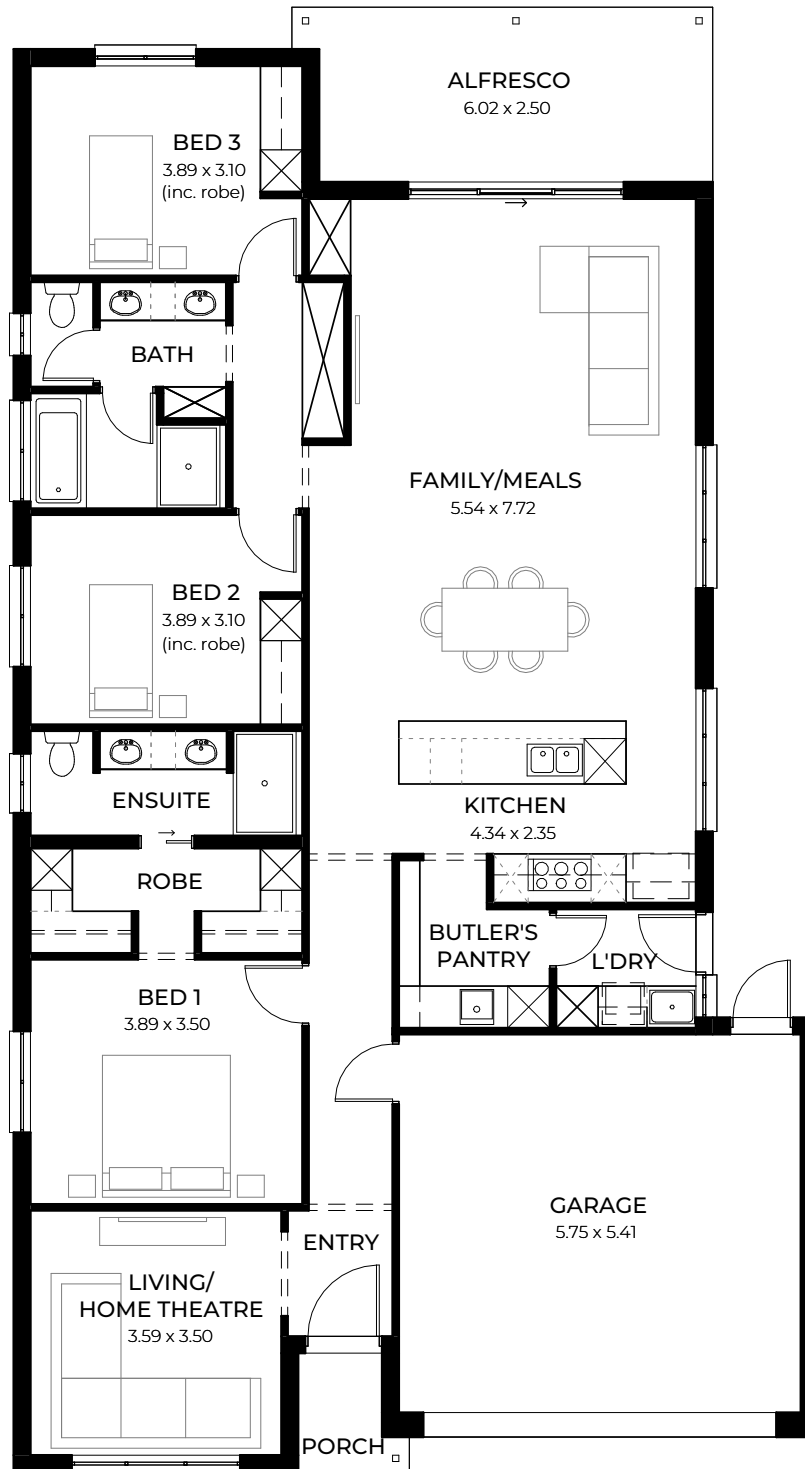


Home theatre or even home office, Halycon has loads of living and lifestyle options with its generous alfresco space forming a natural extension to the light-filled open-plan kitchen, dining and main living area.

LIVING	162.05m ²
PORCH	3.18m ²
ALFRESCO	14.31m ²
GARAGE	34.89m ²
WIDTH	11.50m (incl. garage)
DEPTH	21.65m
TOTAL	214.43m ² / 23.08 sqs

These floorplans, images and facades are for illustration purposes only. All room sizes are approximate. Unauthorised use of these plans constitutes a breach of copyright which may make you personally liable for damages. The industry standard is 20% of the contract sum. E&OE

HALYCON_5



For blocks with a 5m set back

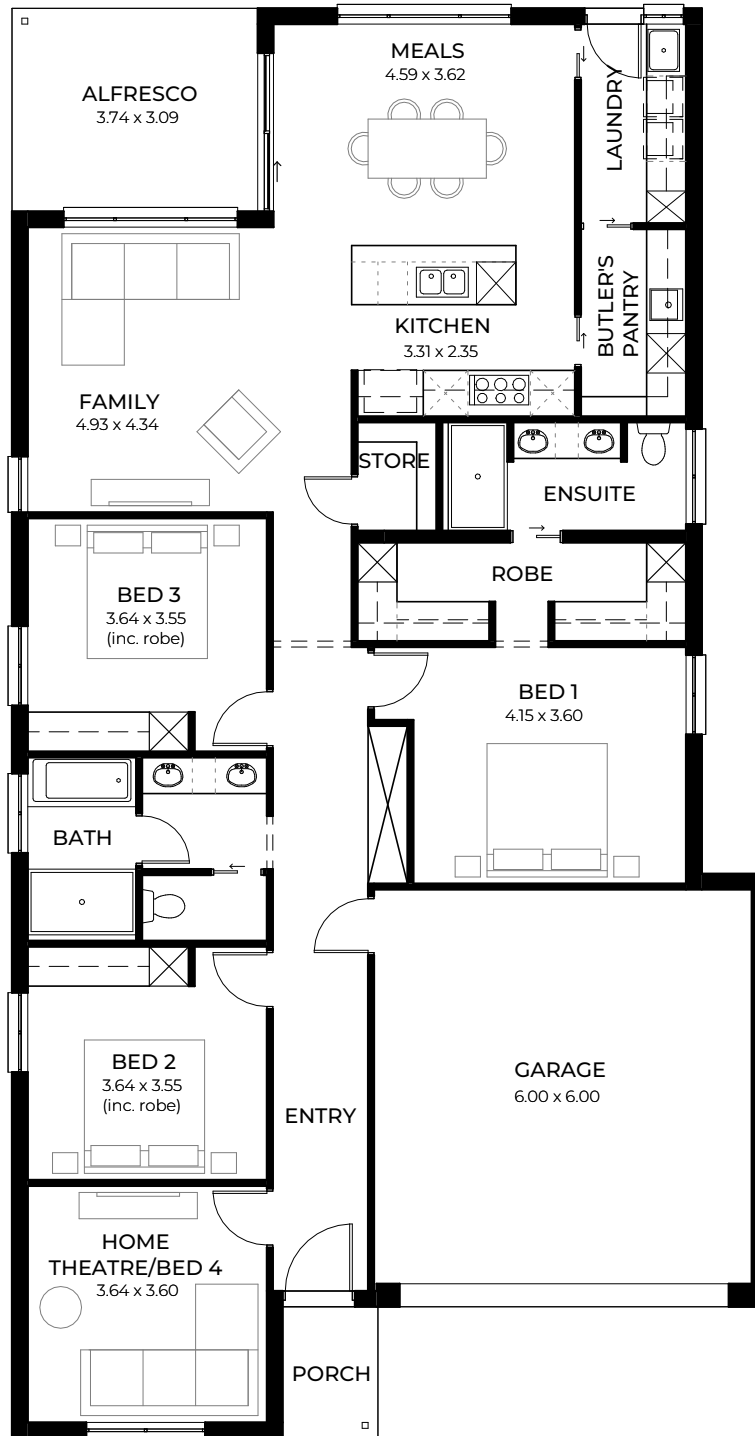


The double garage, butler's pantry and adjacent laundry plus dual passageways for bedroom privacy are added design touches in the Halycon.

LIVING	162.19m ²
PORCH	2.24m ²
ALFRESCO	14.31m ²
GARAGE	35.21m ²
WIDTH	11.50m (incl. garage)
DEPTH	20.95m
TOTAL	213.95m ² / 23.02 sqs

These floorplans, images and facades are for illustration purposes only. All room sizes are approximate. Unauthorised use of these plans constitutes a breach of copyright which may make you personally liable for damages. The industry standard is 20% of the contract sum. E&OE

MAXIM 3.5



Suits masterplanned estates and deep infill blocks

For blocks with a 3.5m set back

2 3 2 2

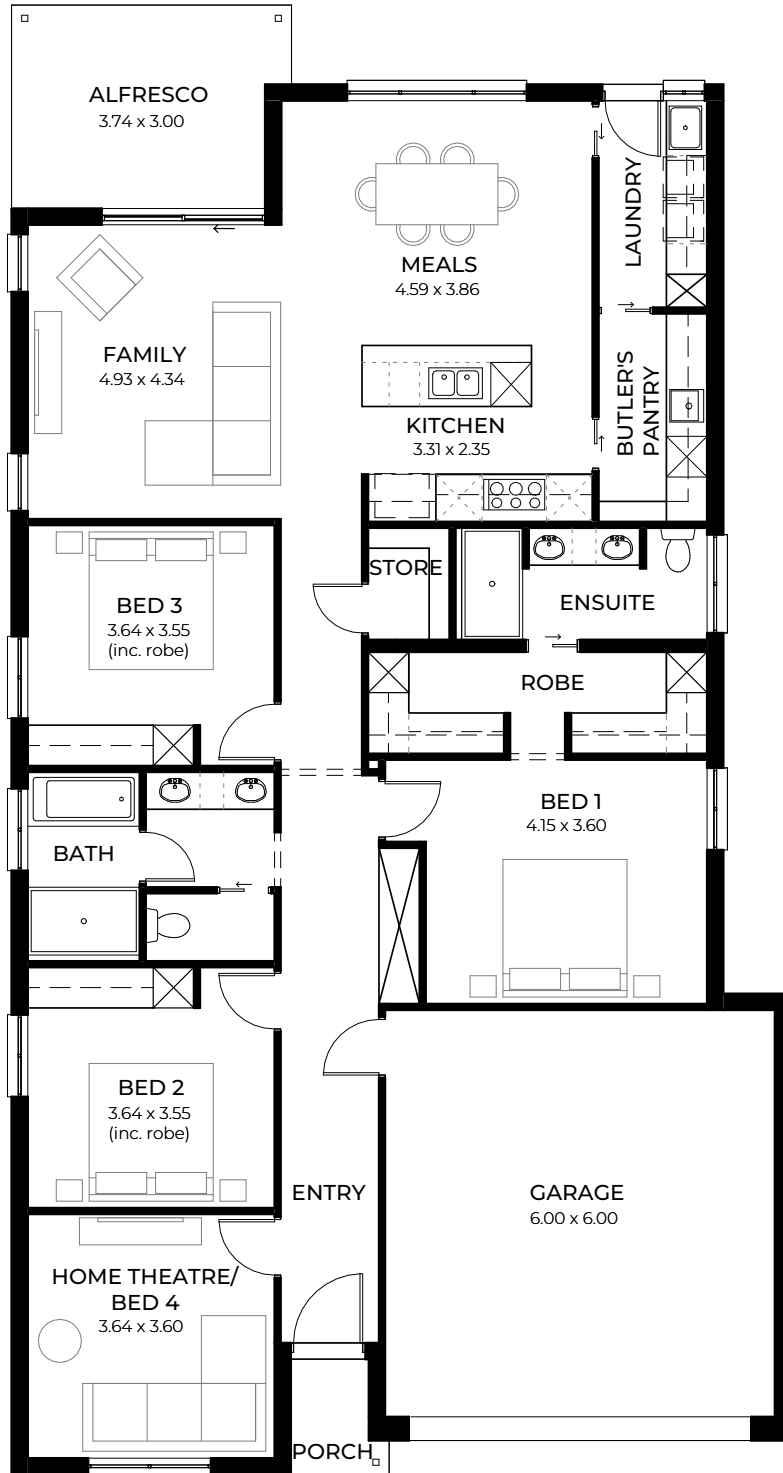
Designed by award-winning architect Francesco Bonato

The Maxim has first homebuyers and families in mind with plenty of clever design ideas from the innovative laundry/pantry pod to a master away from street noise, and it's a home filled with great storage.

LIVING	172.45m ²
PORCH	2.90m ²
ALFRESCO	11.56m ²
GARAGE	38.31m ²
WIDTH	11.50m (incl. garage)
DEPTH	21.76m
TOTAL	225.22m ² / 24.24 sqs

These floorplans, images and facades are for illustration purposes only. All room sizes are approximate. Unauthorised use of these plans constitutes a breach of copyright which may make you personally liable for damages. The industry standard is 20% of the contract sum. E&OE

MAXIM_5



Suits masterplanned estates and deep infill blocks

For blocks with a 5m set back

2 3 2 2

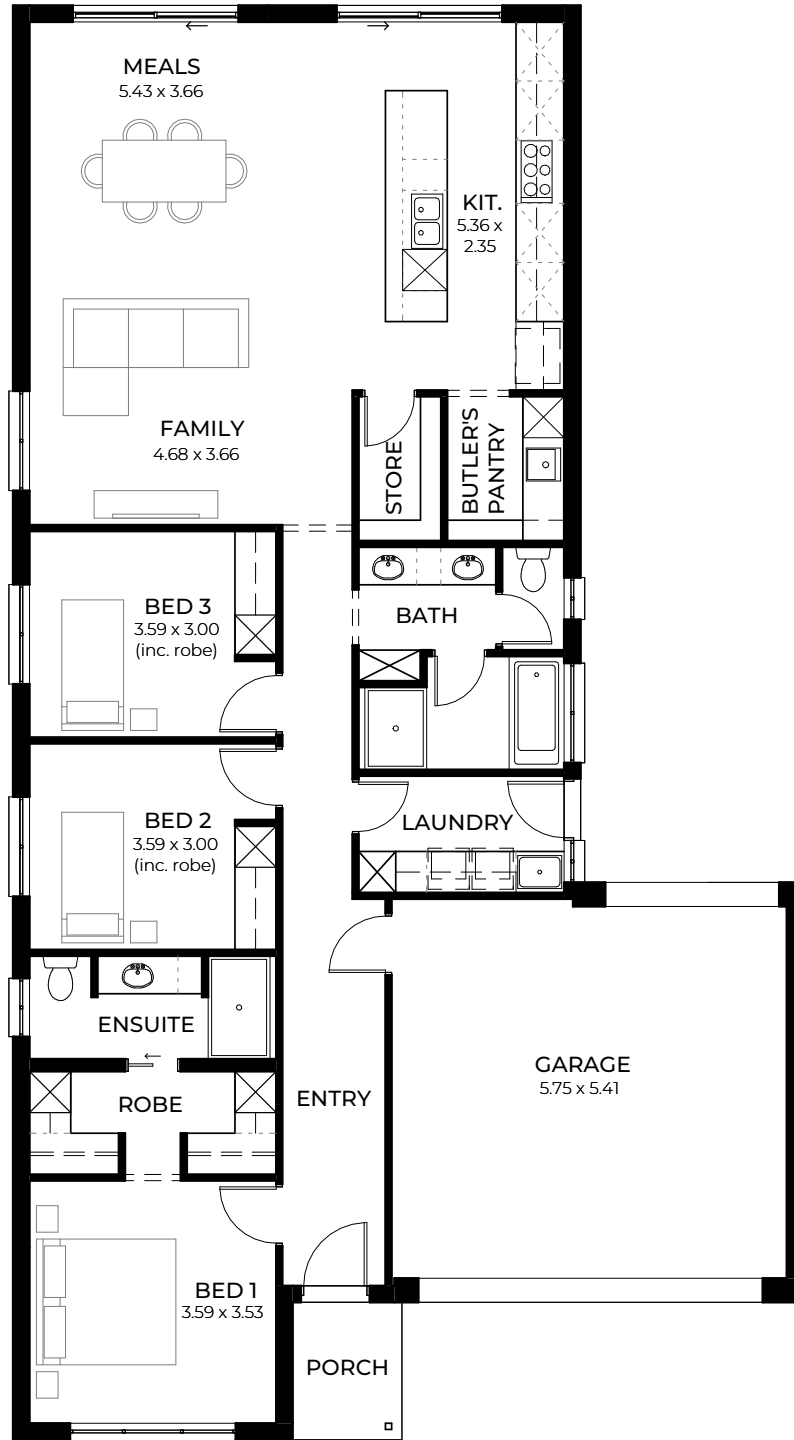
Designed by award-winning architect Francesco Bonato

Every square centimetre is carefully considered in this design, with a clever three-way bathroom, large sized bedrooms, a handy store and a separate home theatre away from the spacious casual living zone.

LIVING	171.76m ²
PORCH	2.11m ²
ALFRESCO	11.68m ²
GARAGE	38.66m ²
WIDTH	11.50m (incl. garage)
DEPTH	21.67m
TOTAL	224.21m ² / 24.13 sqs

These floorplans, images and facades are for illustration purposes only. All room sizes are approximate. Unauthorised use of these plans constitutes a breach of copyright which may make you personally liable for damages. The industry standard is 20% of the contract sum. E&OE

SANCTUARY 3.5



For blocks with a 3.5m set back



Living up to its name, Sanctuary is a dream retreat for the whole family with affordable luxury in the master suite, a three-way bathroom and generous-sized bedrooms.

LIVING	147.83m ²
PORCH	3.18m ²
GARAGE	35.97m ²
WIDTH	11.50m (incl. garage)
DEPTH	20.87m
TOTAL	186.98m ² / 20.12 sqs

These floorplans, images and facades are for illustration purposes only. All room sizes are approximate. Unauthorised use of these plans constitutes a breach of copyright which may make you personally liable for damages. The industry standard is 20% of the contract sum. E&OE

SANCTUARY_5



For blocks with a 5m set back



The ample bench space, modern 900mm appliances, extra store and butler's pantry create a dream gourmet kitchen, while expansive windows create a bright and welcoming living and dining area.

LIVING	139.97m ²
PORCH	2.24m ²
GARAGE	36.28m ²
WIDTH	11.50m (incl. garage)
DEPTH	19.37m
TOTAL	178.49m ² / 19.21 sqs

These floorplans, images and facades are for illustration purposes only. All room sizes are approximate. Unauthorised use of these plans constitutes a breach of copyright which may make you personally liable for damages. The industry standard is 20% of the contract sum. E&OE

UMBRA_3.5



For blocks with a 3.5m set back

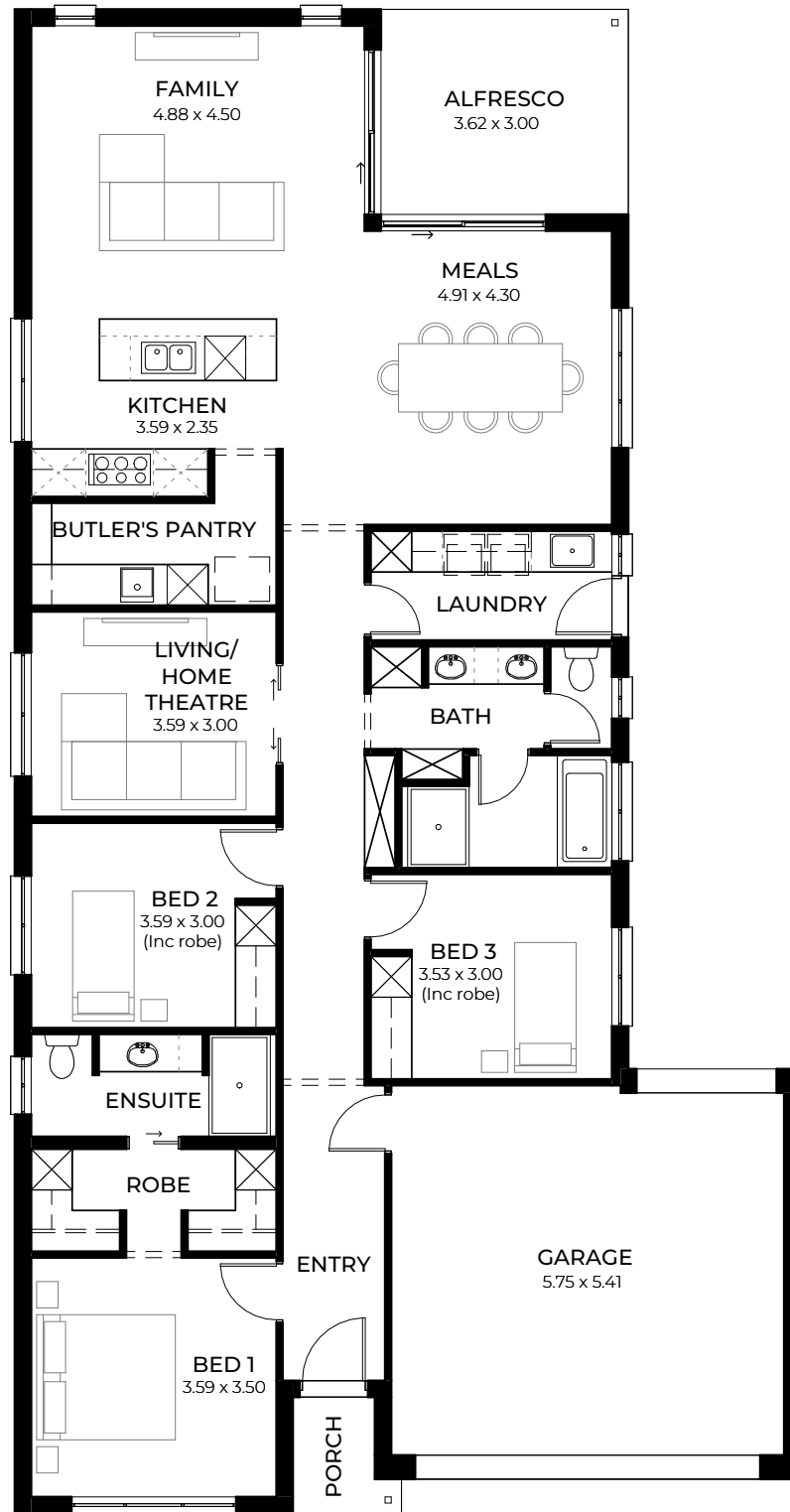


An extra-large butler's pantry housing the fridge turns this gorgeous designer kitchen into an added entertaining area, while the outdoor alfresco space is a seamless extension of both living and dining areas.

LIVING	166.73m ²
PORCH	3.18m ²
ALFRESCO	12.67m ²
GARAGE	35.14m ²
WIDTH	11.50m (incl. garage)
DEPTH	23.30m
TOTAL	217.72m ² / 23.43 sqs

These floorplans, images and facades are for illustration purposes only. All room sizes are approximate. Unauthorised use of these plans constitutes a breach of copyright which may make you personally liable for damages. The industry standard is 20% of the contract sum. E&OE

UMBRA_5



For blocks with a 5m set back

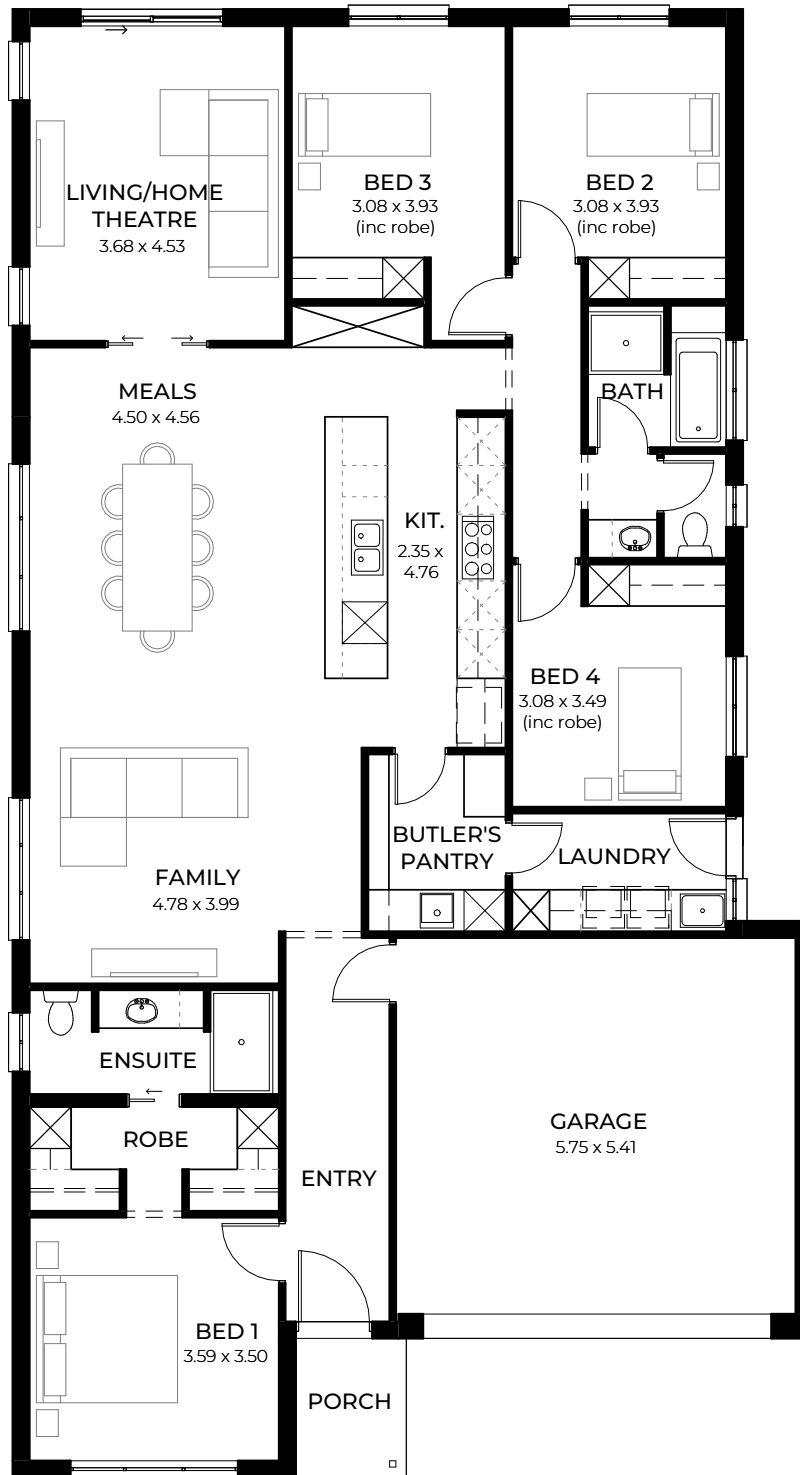


A central home theatre is ideally located close to the kitchen for snacks, while the super-size main bathroom features double vanities.

LIVING	162.47m ²
PORCH	2.24m ²
ALFRESCO	10.86m ²
GARAGE	35.45m ²
WIDTH	11.50m (incl. garage)
DEPTH	22m
TOTAL	211.02m ² / 22.71 sqs

These floorplans, images and facades are for illustration purposes only. All room sizes are approximate. Unauthorised use of these plans constitutes a breach of copyright which may make you personally liable for damages. The industry standard is 20% of the contract sum. E&OE

ZEPHYR_3.5



For blocks with a 3.5m set back

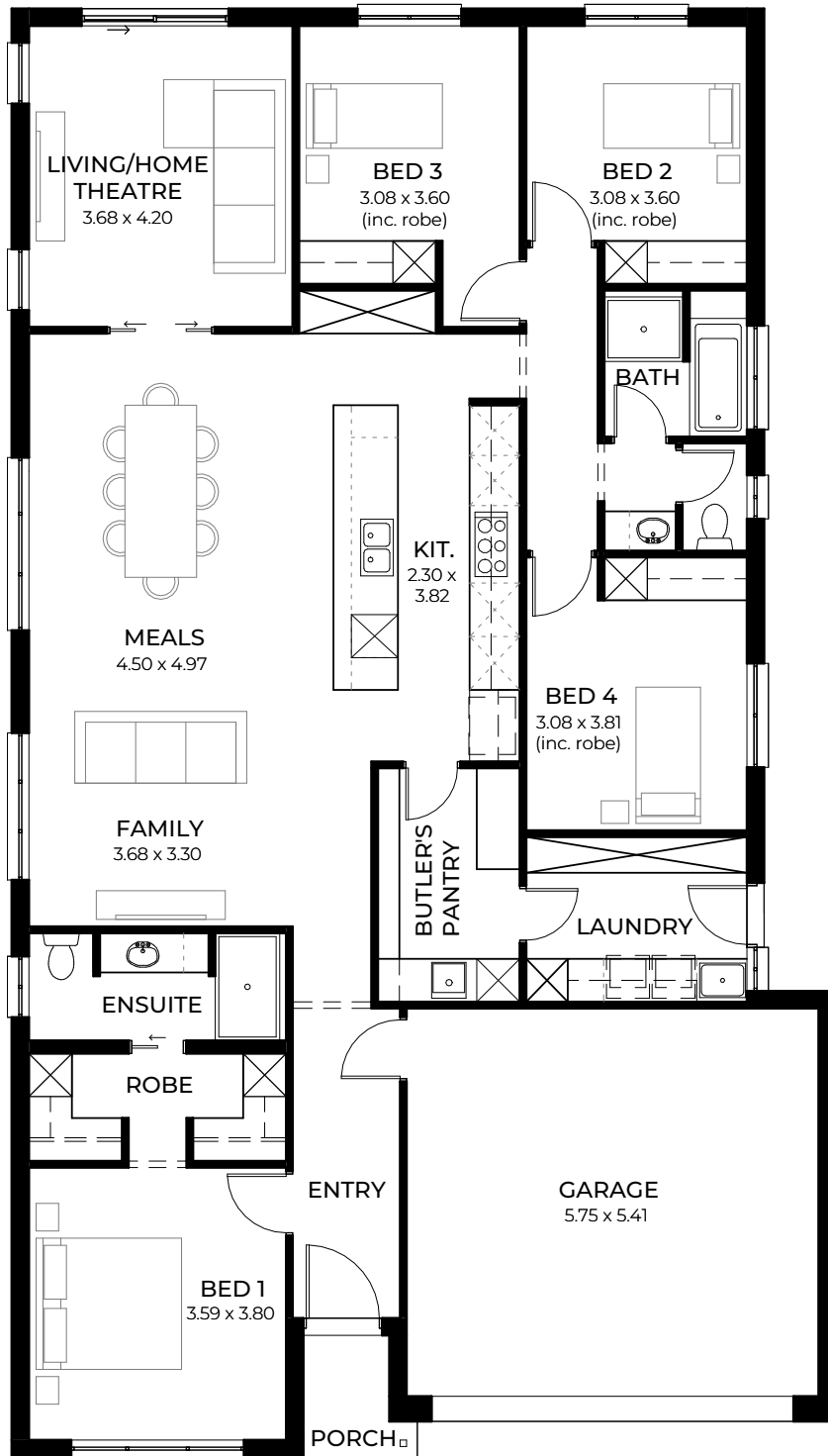


This four bedroom beauty is affordable luxury at its best. The sleeping zones and bathrooms surround the central, open-plan living, dining and home theatre bringing everyone together in an easily accessible space with good flow and circulation.

LIVING	180.02m ²
PORCH	3.18m ²
GARAGE	34.77m ²
WIDTH	11.50m (incl. garage)
DEPTH	21.10m
TOTAL	217.97m ² / 23.46 sqs

These floorplans, images and facades are for illustration purposes only. All room sizes are approximate. Unauthorised use of these plans constitutes a breach of copyright which may make you personally liable for damages. The industry standard is 20% of the contract sum. E&OE

ZEPHYR_5



For blocks with a 5m set back



You'll love the super-sized butler's pantry and laundry with stylish joinery and storage space plus robes in every bedroom, not forgetting the double garage.

LIVING	178.36m ²
PORCH	2.24m ²
GARAGE	35.09m ²
WIDTH	11.50m (incl. garage)
DEPTH	20.20m
TOTAL	215.69m ² / 23.21 sqs

These floorplans, images and facades are for illustration purposes only. All room sizes are approximate. Unauthorised use of these plans constitutes a breach of copyright which may make you personally liable for damages. The industry standard is 20% of the contract sum. E&OE



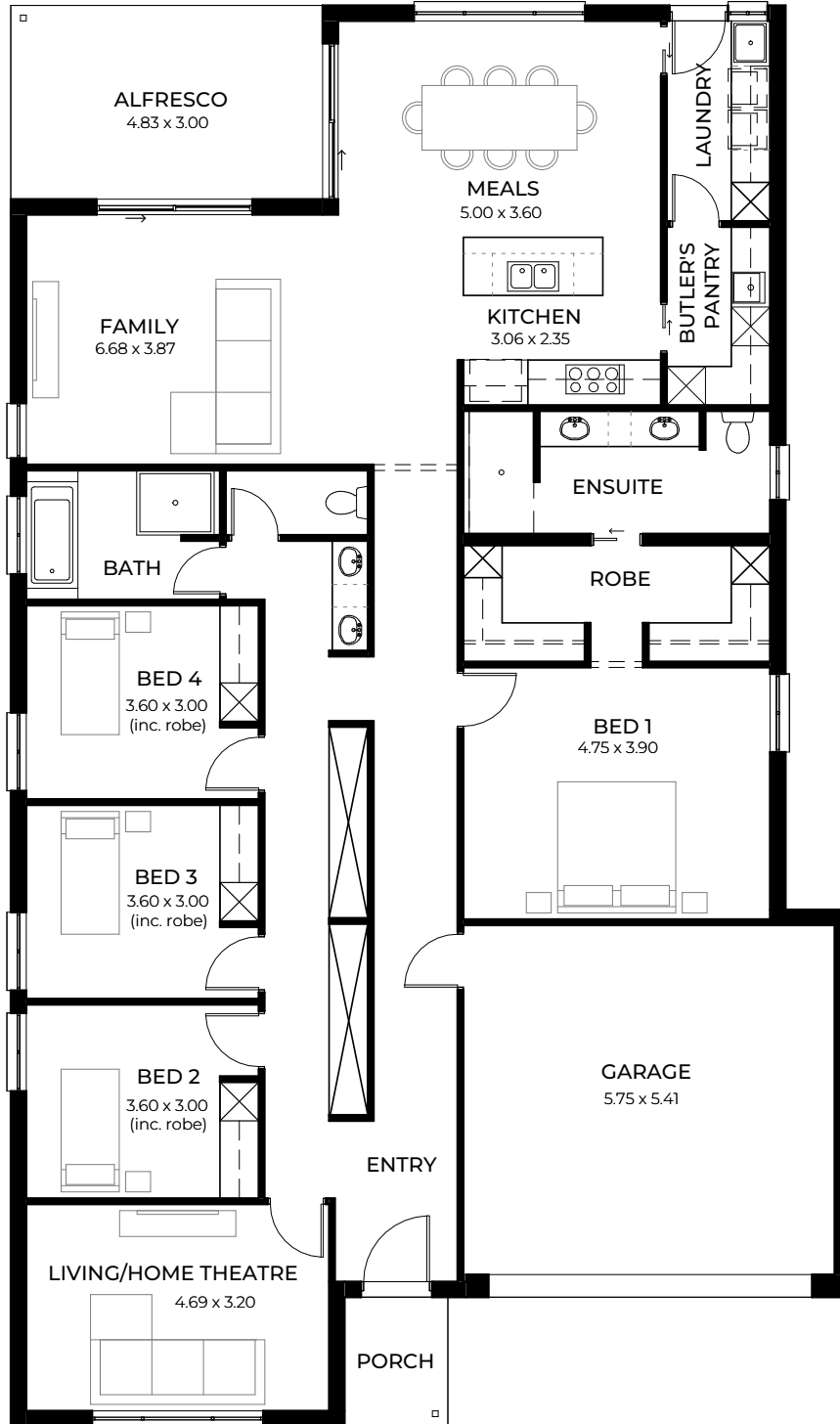


DESIGNS TO SUIT

14m+ Wide Blocks

Discover a range of functional layouts with no constraints on space. Enjoy the luxury of having multiple breakaway areas, giving everyone a space to call their own, while get-togethers are more enjoyable for the family-friendly layout in our kitchen, dining and entertaining spaces.

ELYSIAN_3.5



For blocks with a 3.5m set back



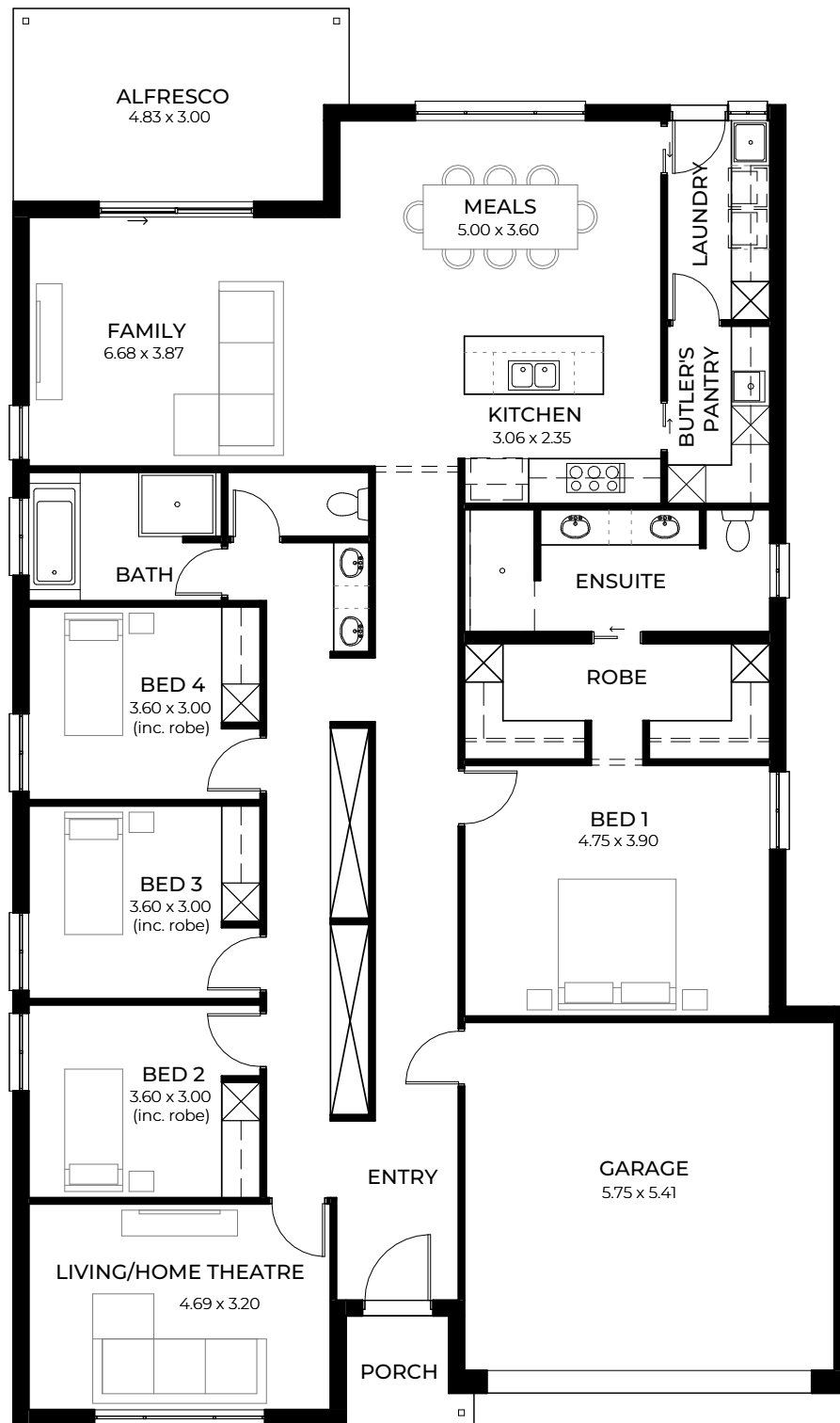
Designed by award-winning architect Francesco Bonato

The four bedroom Elysian is full of clever design ideas like a dual hallway with cupboards that cleverly separate the sleeping zones, and a designer kitchen with a large butler's pantry that conveniently connects to a laundry pod.

LIVING	207.08m ²
PORCH	3.20m ²
ALFRESCO	14.49m ²
GARAGE	34.77m ²
WIDTH	13m (incl. garage)
DEPTH	22m
TOTAL	259.54m ² / 27.93 sqs

These floorplans, images and facades are for illustration purposes only. All room sizes are approximate. Unauthorised use of these plans constitutes a breach of copyright which may make you personally liable for damages. The industry standard is 20% of the contract sum. E&OE

ELYSIAN_5



For blocks with a 5m set back



Designed by award-winning architect Francesco Bonato

A luxurious master suite with a super-sized robe and an ensuite with walk in shower, plus a large casual living area that wraps around an outdoor alfresco and a separate home theatre, makes this home a joy to live in.

LIVING	204.33m ²
PORCH	2.92m ²
ALFRESCO	15.08m ²
GARAGE	35.09m ²
WIDTH	13m (incl. garage)
DEPTH	22m
TOTAL	257.42m ² / 27.70 sqs

These floorplans, images and facades are for illustration purposes only. All room sizes are approximate. Unauthorised use of these plans constitutes a breach of copyright which may make you personally liable for damages. The industry standard is 20% of the contract sum. E&OE

LUMO_3.5



For blocks with a 3.5m set back

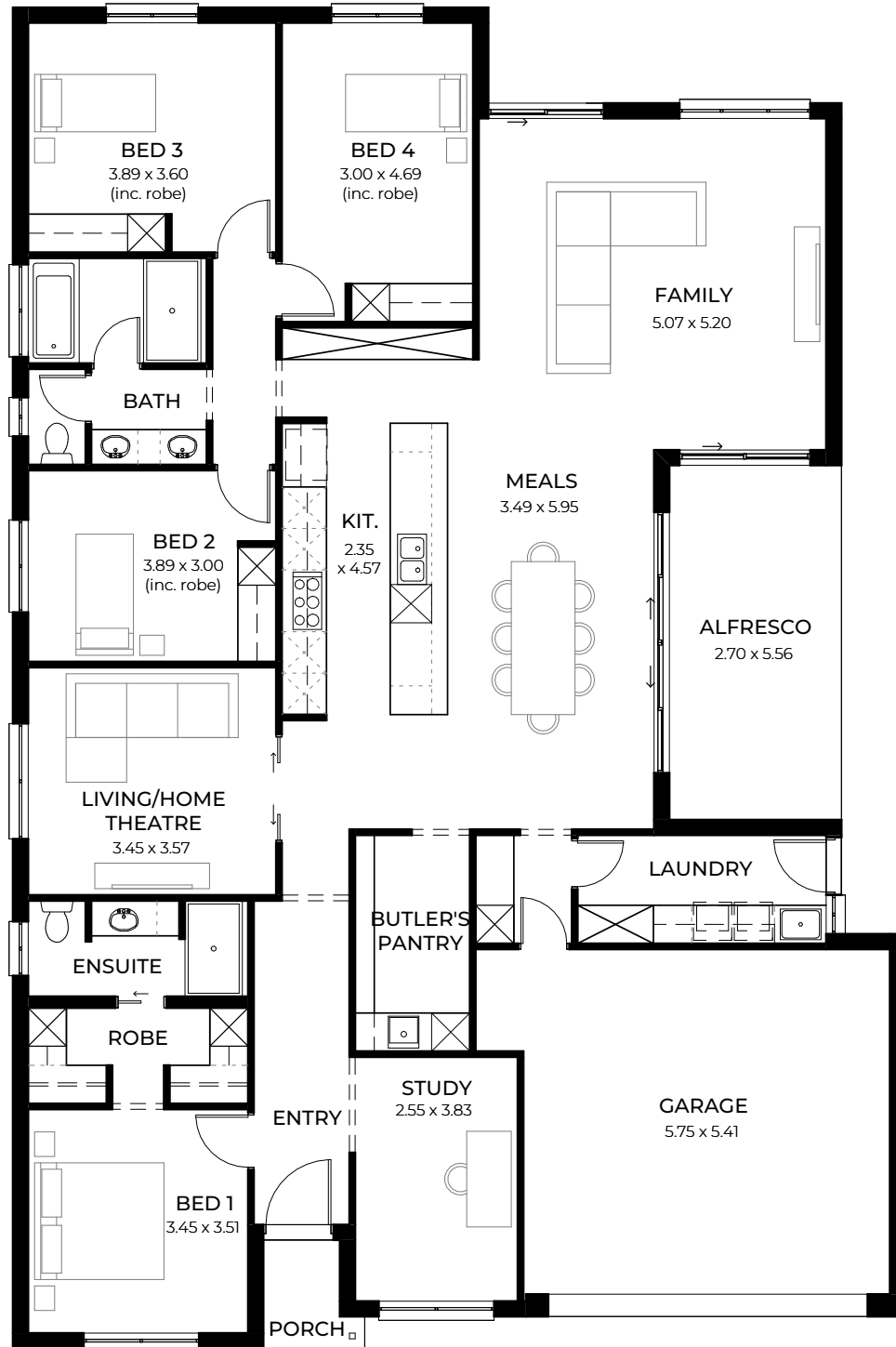


Lumo has everything you need in a modern four-bedroom family home that cleverly balances comfort, style and functionality. Sleeping zones, including the luxury master bedroom plus a study, are separated from the home theatre and central living spaces, which hug a relaxing central alfresco area.

LIVING	208.84m ²
PORCH	3.18m ²
ALFRESCO	16.68m ²
GARAGE	35.73m ²
WIDTH	14m (incl. garage)
DEPTH	21.03m
TOTAL	264.43m ² / 28.46 sqs

These floorplans, images and facades are for illustration purposes only. All room sizes are approximate. Unauthorised use of these plans constitutes a breach of copyright which may make you personally liable for damages. The industry standard is 20% of the contract sum. E&OE

LUMO_5



For blocks with a 5m set back

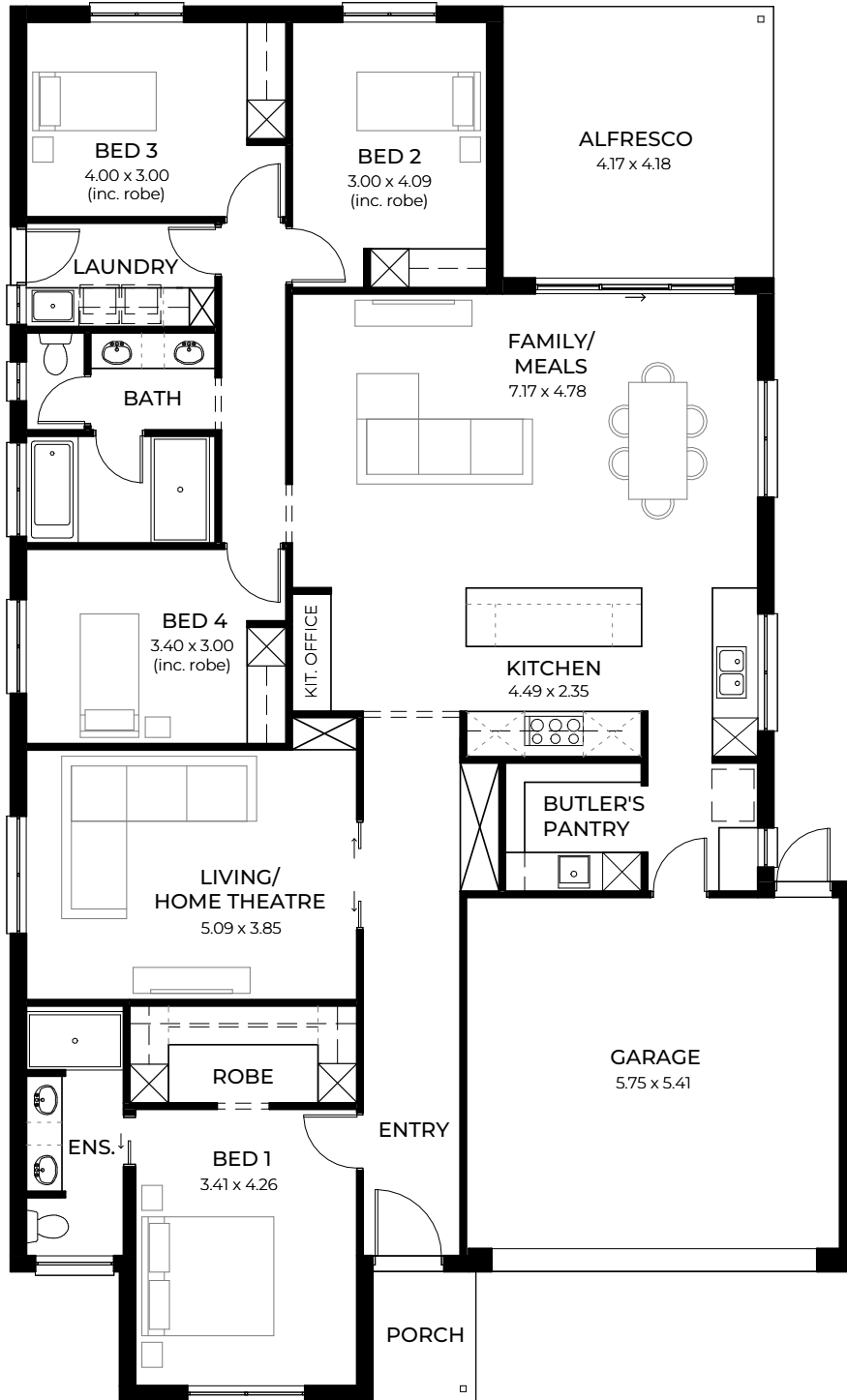
2
4
2
2

Multi-tasking is made easy in the Lumo with the laundry, a cook's delight kitchen, pantry and bath time all within close reach. Plus a study located away from household noise.

LIVING	214.12m ²
PORCH	2.24m ²
ALFRESCO	15.01m ²
GARAGE	35.97m ²
WIDTH	14m (incl. garage)
DEPTH	21.03m
TOTAL	267.34m ² / 28.77 sqs

These floorplans, images and facades are for illustration purposes only. All room sizes are approximate. Unauthorised use of these plans constitutes a breach of copyright which may make you personally liable for damages. The industry standard is 20% of the contract sum. E&OE

LYRA_3.5



For blocks with a 3.5m set back

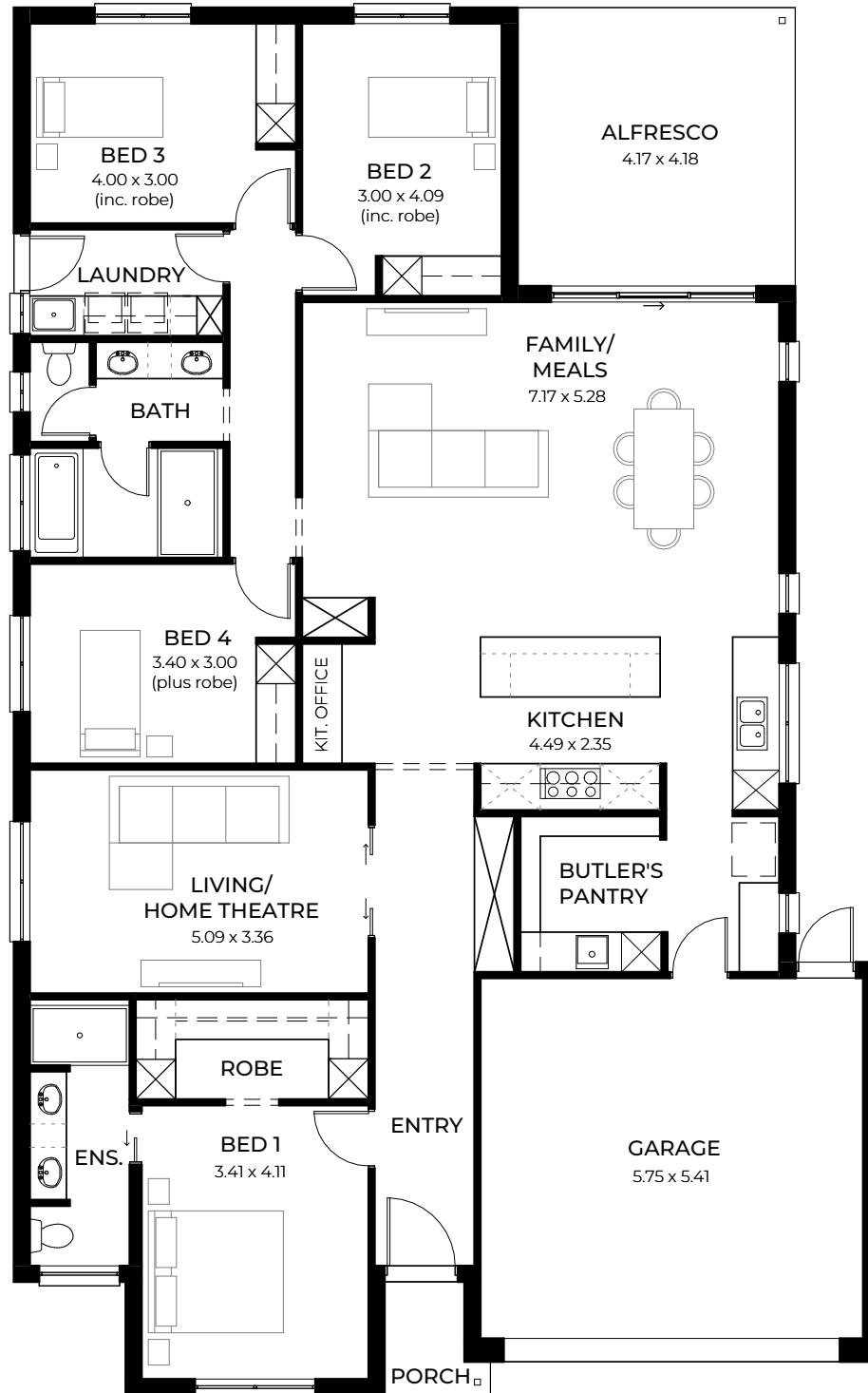


With its handy garage opening straight into a butler's pantry and bright and airy kitchen beyond, Lyra fuses functionality with style in this spacious four bedroom design. An impressive master bedroom retreat and home theatre occupy the home's front wing.

LIVING	191.65m ²
PORCH	3.18m ²
ALFRESCO	17.43m ²
GARAGE	34.83m ²
WIDTH	13m (incl. garage)
DEPTH	21.47m
TOTAL	247.09m ² / 26.59 sqs

These floorplans, images and facades are for illustration purposes only. All room sizes are approximate. Unauthorised use of these plans constitutes a breach of copyright which may make you personally liable for damages. The industry standard is 20% of the contract sum. E&OE

LYRA_5



For blocks with a 5m set back



Lyra is designed with a growing or established family in mind, with its laundry and main bathroom ideally positioned close to the bedrooms. And the kitchen office is a perfect spot to Google culinary inspiration.

LIVING	192.14m ²
PORCH	2.24m ²
ALFRESCO	17.43m ²
GARAGE	35.15m ²
WIDTH	13m (incl. garage)
DEPTH	20.83m
TOTAL	246.96m ² / 26.58 sqs

These floorplans, images and facades are for illustration purposes only. All room sizes are approximate. Unauthorised use of these plans constitutes a breach of copyright which may make you personally liable for damages. The industry standard is 20% of the contract sum. E&OE

OPAL_3.5



For blocks with a 3.5m set back

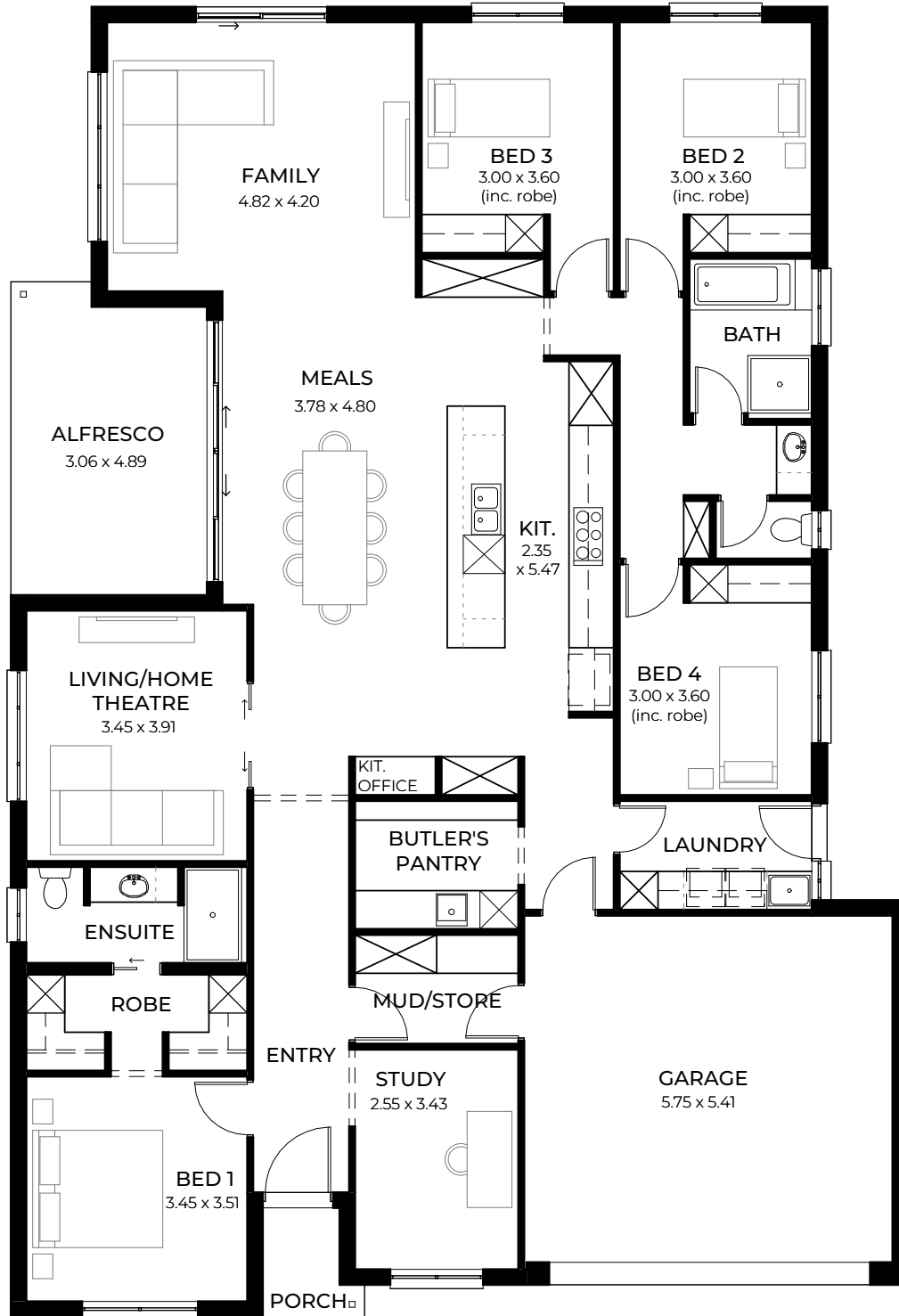


Opal sparkles with family-friendly features - garage opens to both mud room and laundry for dirty sports gear, a clever main bathroom layout is ideal for busy mornings, and multiple indoor-outdoor entertaining spaces for everyone.

LIVING	210.37m ²
PORCH	3.18m ²
ALFRESCO	18.85m ²
GARAGE	34.83m ²
WIDTH	14m (incl. garage)
DEPTH	21.94m
TOTAL	267.23m ² / 28.76 sqs

These floorplans, images and facades are for illustration purposes only. All room sizes are approximate. Unauthorised use of these plans constitutes a breach of copyright which may make you personally liable for damages. The industry standard is 20% of the contract sum. E&OE

OPAL_5



For blocks with a 5m set back

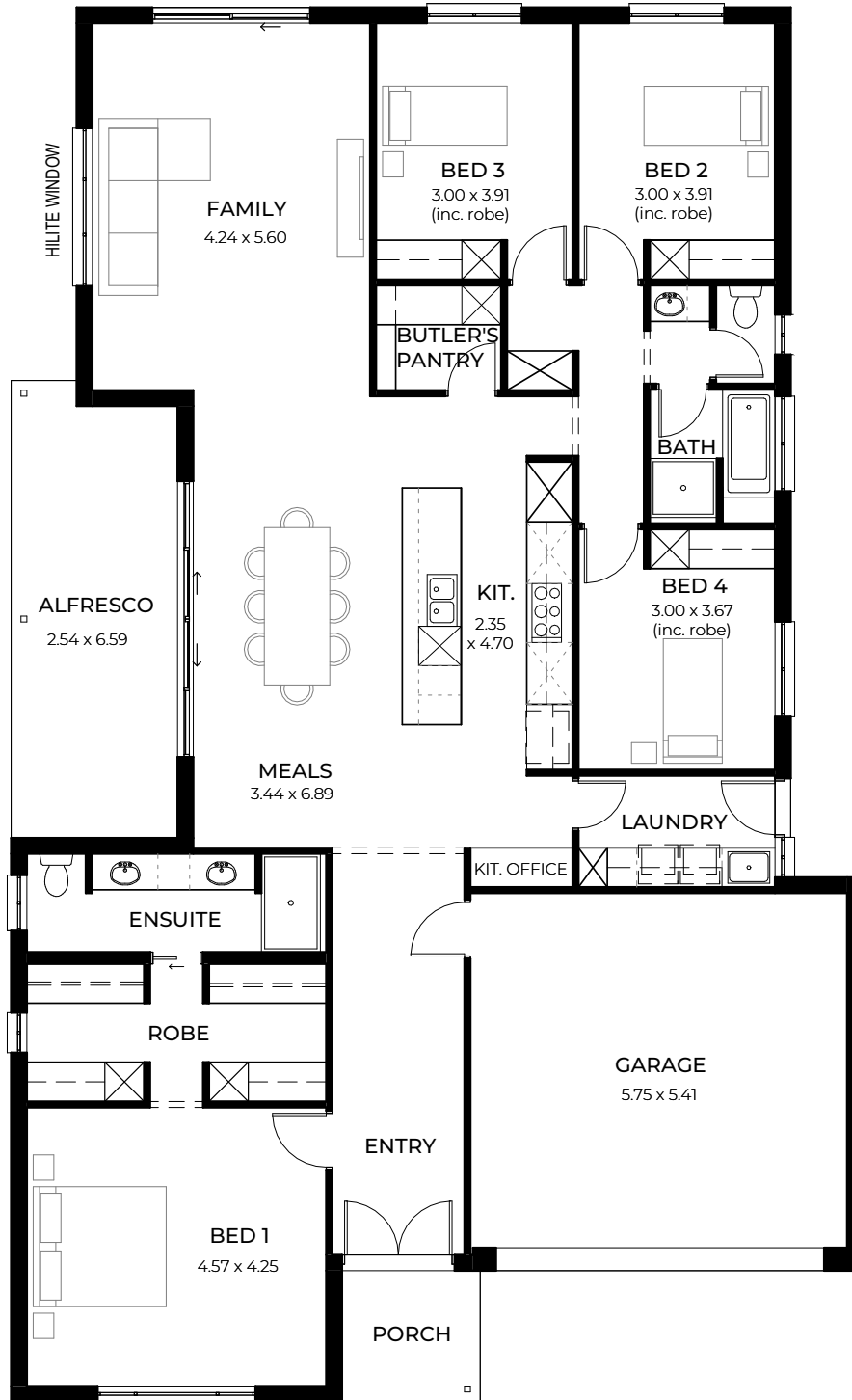


There is plenty for grown-ups in the four bedroom Opal with a quiet retreat or study in its master suite zone, loads of storage in both the laundry and butler's pantry and a cook's kitchen with abundant bench space for food prep.

LIVING	207.62m ²
PORCH	2.24m ²
ALFRESCO	14.26m ²
GARAGE	34.83m ²
WIDTH	14m (incl. garage)
DEPTH	20.44m
TOTAL	258.95m ² / 27.87 sqs

These floorplans, images and facades are for illustration purposes only. All room sizes are approximate. Unauthorised use of these plans constitutes a breach of copyright which may make you personally liable for damages. The industry standard is 20% of the contract sum. E&OE

VESTIGE_3.5



For blocks with a 3.5m set back

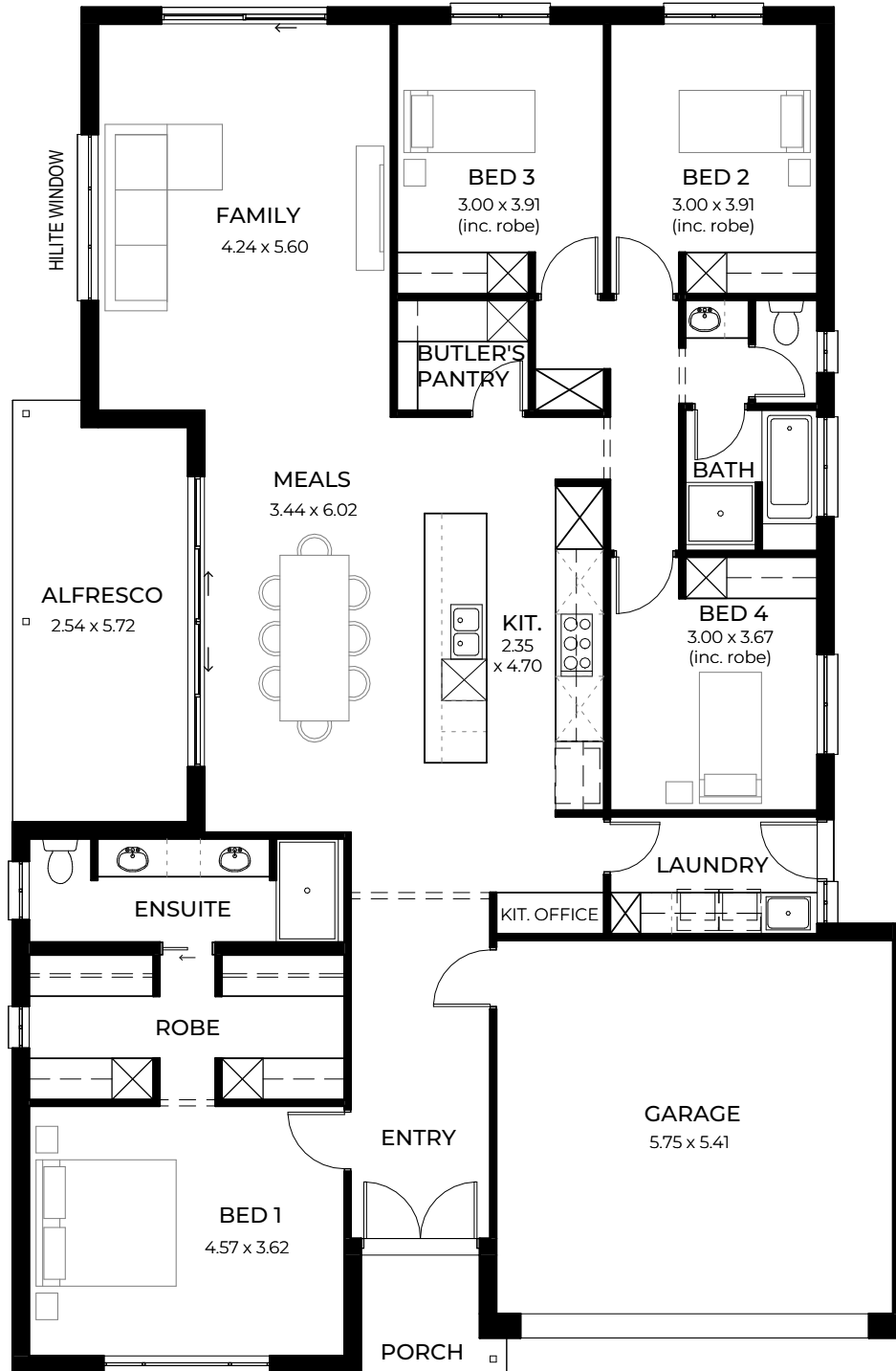


A luxurious master retreat with a glamorous walk-in robe and double vanity ensuite is thoughtfully positioned away from the rest of the home.

LIVING	188.40m ²
PORCH	4.22m ²
ALFRESCO	17.13m ²
GARAGE	34.80m ²
WIDTH	13m (incl. garage)
DEPTH	21.27m
TOTAL	244.55m ² / 26.32 sqs

These floorplans, images and facades are for illustration purposes only. All room sizes are approximate. Unauthorised use of these plans constitutes a breach of copyright which may make you personally liable for damages. The industry standard is 20% of the contract sum. E&OE

VESTIGE_5



For blocks with a 5m set back



Lots of extra touches such as a kitchen nook or office area great for Googling recipes, loads of laundry and hallway storage, a butler's pantry and light-filled and airy entertaining spaces.

LIVING	180.65m ²
PORCH	3.12m ²
ALFRESCO	14.92m ²
GARAGE	35.11m ²
WIDTH	13m (incl. garage)
DEPTH	19.77m
TOTAL	233.80m ² / 25.16 sqs

These floorplans, images and facades are for illustration purposes only. All room sizes are approximate. Unauthorised use of these plans constitutes a breach of copyright which may make you personally liable for damages. The industry standard is 20% of the contract sum. E&OE





DESIGNS TO SUIT

16m+ Wide Blocks

When you have space, you want to maximise it; our designs for 16m+ wide blocks are built for living large with room for all the family and more. An entertainer's dream for a free-flowing indoor-outdoor lifestyle, there are multiple living spaces, generous bedrooms, a mud room off the garage and a relaxing kitchen layout. These designs ensure your address will be home to everyone.

AZURE_3.5



For blocks with a 3.5m set back



A five bedroom beauty, Azure is for families who love to spread out. Generous-sized bedrooms, including the dreamy master suite, as well as a wow-factor home theatre.

LIVING	227.05m ²
PORCH	3.18m ²
ALFRESCO	18.53m ²
GARAGE	40.66m ²
WIDTH	16m (incl. garage)
DEPTH	20.23m
TOTAL	289.42m ² / 31.15 sqs

These floorplans, images and facades are for illustration purposes only. All room sizes are approximate. Unauthorised use of these plans constitutes a breach of copyright which may make you personally liable for damages. The industry standard is 20% of the contract sum. E&OE

AZURE_5



For blocks with a 5m set back



It's the extras in Azure that raise its bar: the handy mud room or storage off the garage, the extra-large butler's pantry, double vanity in the main bathroom, hallway storage and a generous laundry.

LIVING	228.88m ²
PORCH	2.24m ²
ALFRESCO	17.78m ²
GARAGE	40.66m ²
WIDTH	16m (incl. garage)
DEPTH	19.37m
TOTAL	289.56m ² / 31.16 sqs

These floorplans, images and facades are for illustration purposes only. All room sizes are approximate. Unauthorised use of these plans constitutes a breach of copyright which may make you personally liable for damages. The industry standard is 20% of the contract sum. E&OE

LUNE_3.5



For blocks with a 3.5m set back



An entertainer's dream, Lune's beautiful, seamless indoor-outdoor living spaces include a designer cook's kitchen and large butler's pantry, while a second living area is ideal for a family home theatre or a grown-up's retreat.

LIVING	224.31m ²
PORCH	3.18m ²
ALFRESCO	22.04m ²
GARAGE	39.96m ²
WIDTH	16m (incl. garage)
DEPTH	20.22m
TOTAL	289.49m ² / 31.16 sqs

These floorplans, images and facades are for illustration purposes only. All room sizes are approximate. Unauthorised use of these plans constitutes a breach of copyright which may make you personally liable for damages. The industry standard is 20% of the contract sum. E&OE

LUNE_5



For blocks with a 5m set back

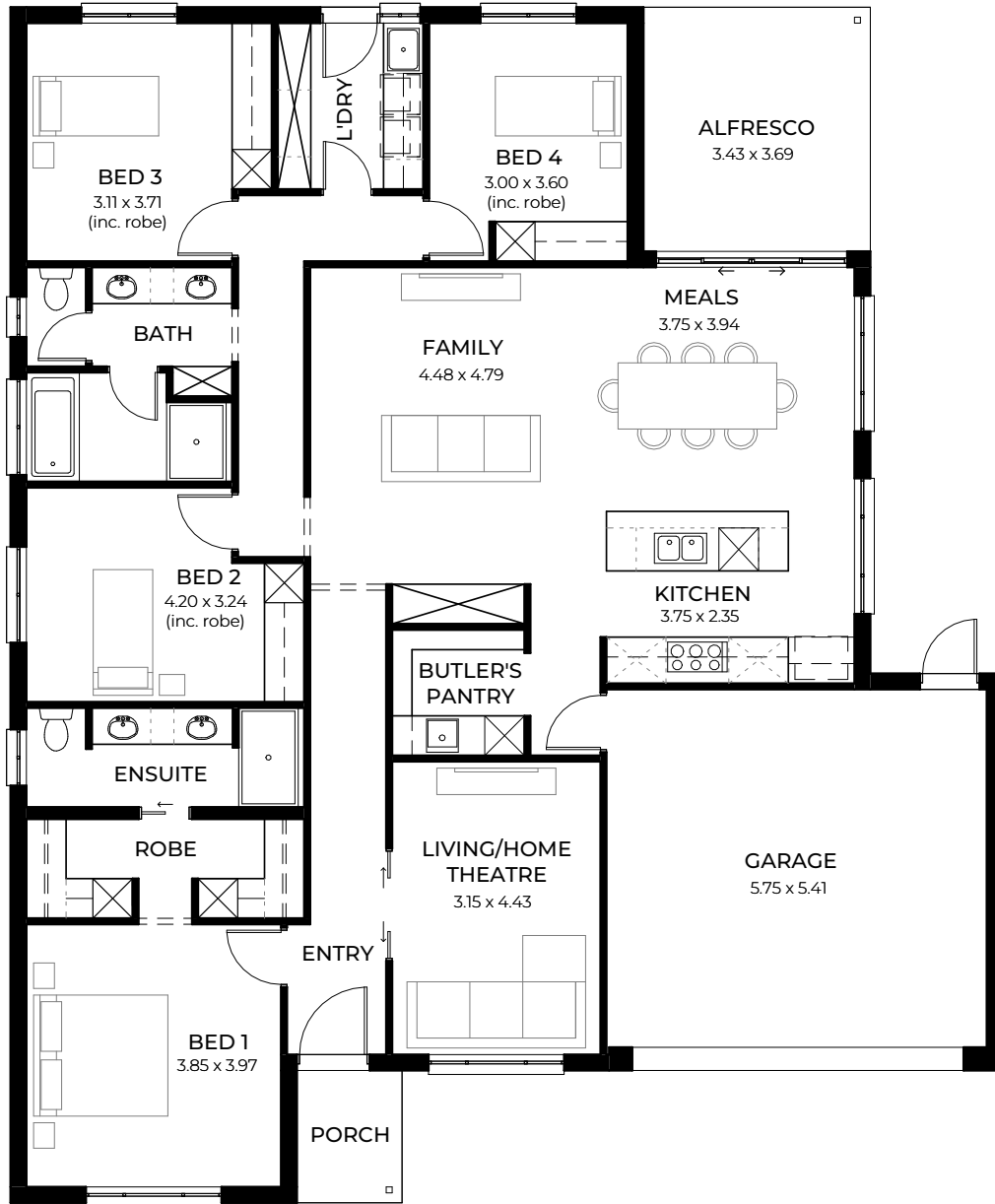


All bathrooms have double vanities with a dream walk-in robe for the master suite, and fantastic mud room and storage off the garage.

LIVING	222.27m ²
PORCH	2.60m ²
ALFRESCO	25.67m ²
GARAGE	39.95m ²
WIDTH	16m (incl. garage)
DEPTH	19.43m
TOTAL	290.49m ² / 31.26 sqs

These floorplans, images and facades are for illustration purposes only. All room sizes are approximate. Unauthorised use of these plans constitutes a breach of copyright which may make you personally liable for damages. The industry standard is 20% of the contract sum. E&OE

MIRA_3.5



For blocks with a 3.5m set back



A convenient rear laundry and shopper's entry from the garage straight to the butler's pantry with garden windows bringing natural light and ventilation to the fabulous kitchen and living areas.

LIVING	181.90m ²
PORCH	3.18m ²
ALFRESCO	12.66m ²
GARAGE	35.01m ²
WIDTH	15m (incl. garage)
DEPTH	18.07m
TOTAL	232.75m ² / 25.05 sqs

These floorplans, images and facades are for illustration purposes only. All room sizes are approximate. Unauthorised use of these plans constitutes a breach of copyright which may make you personally liable for damages. The industry standard is 20% of the contract sum. E&OE

MIRA_5



For blocks with a 5m set back

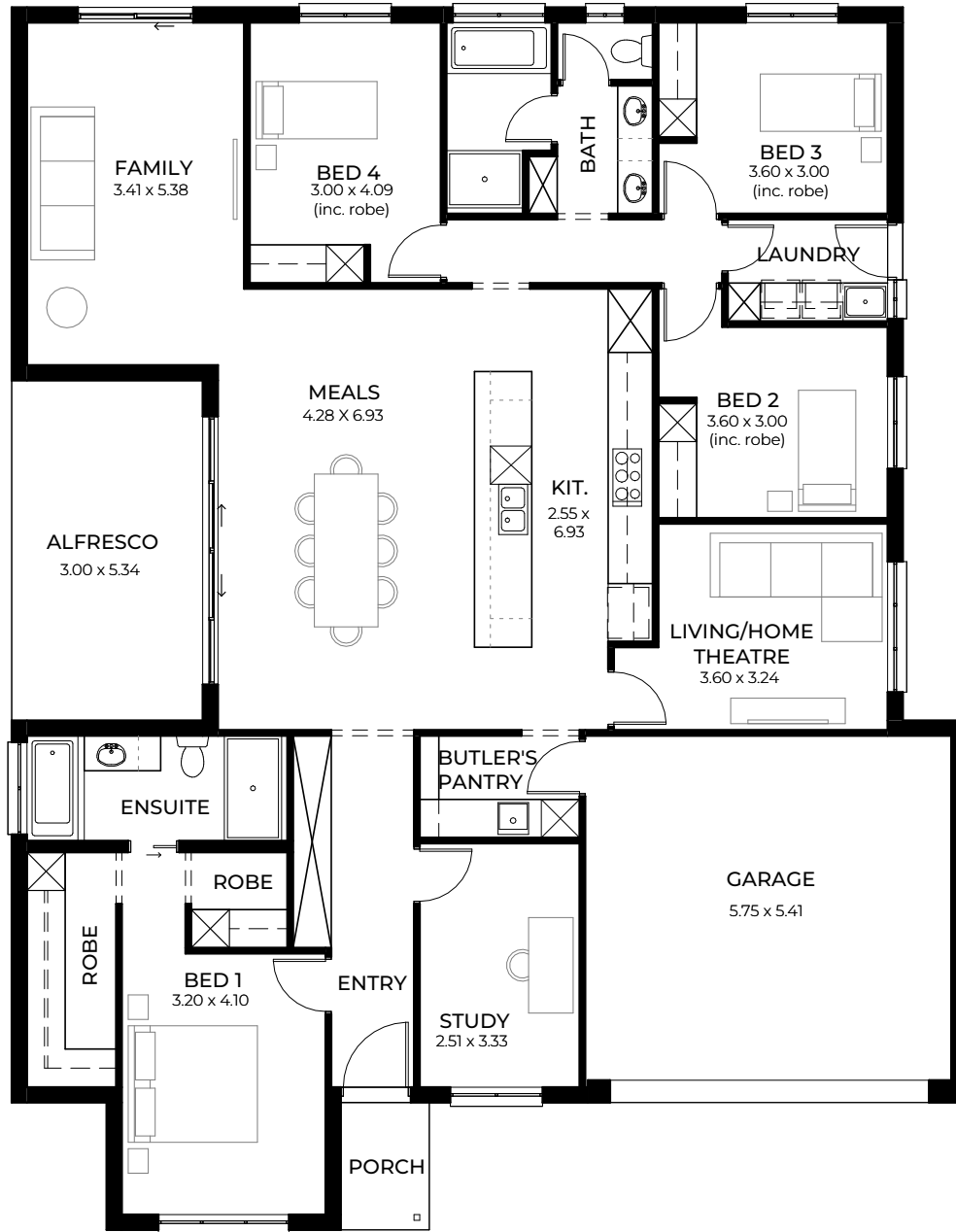


Mira's generous bedrooms have space for studying, a luxurious double walk-in robe in the main suite and a kitchen with views of the stunning undercover alfresco area.

LIVING	179.56m ²
PORCH	2.24m ²
ALFRESCO	12.66m ²
GARAGE	35.01m ²
WIDTH	15m (incl. garage)
DEPTH	17m
TOTAL	229.47m ² / 24.69 sqs

These floorplans, images and facades are for illustration purposes only. All room sizes are approximate. Unauthorised use of these plans constitutes a breach of copyright which may make you personally liable for damages. The industry standard is 20% of the contract sum. E&OE

MUSE_3.5



For blocks with a 3.5m set back



Luxury day-spa-worthy ensuite, a second walk-in robe for shoeaholics, and a spacious main bedroom becomes an even larger parent's retreat with the addition of a study or private lounge.

LIVING	204.97m ²
PORCH	2.78m ²
ALFRESCO	14.42m ²
GARAGE	34.77m ²
WIDTH	15m (incl. garage)
DEPTH	19.20m
TOTAL	256.94m ² / 27.65 sqs

These floorplans, images and facades are for illustration purposes only. All room sizes are approximate. Unauthorised use of these plans constitutes a breach of copyright which may make you personally liable for damages. The industry standard is 20% of the contract sum. E&OE

MUSE_5



For blocks with a 5m set back

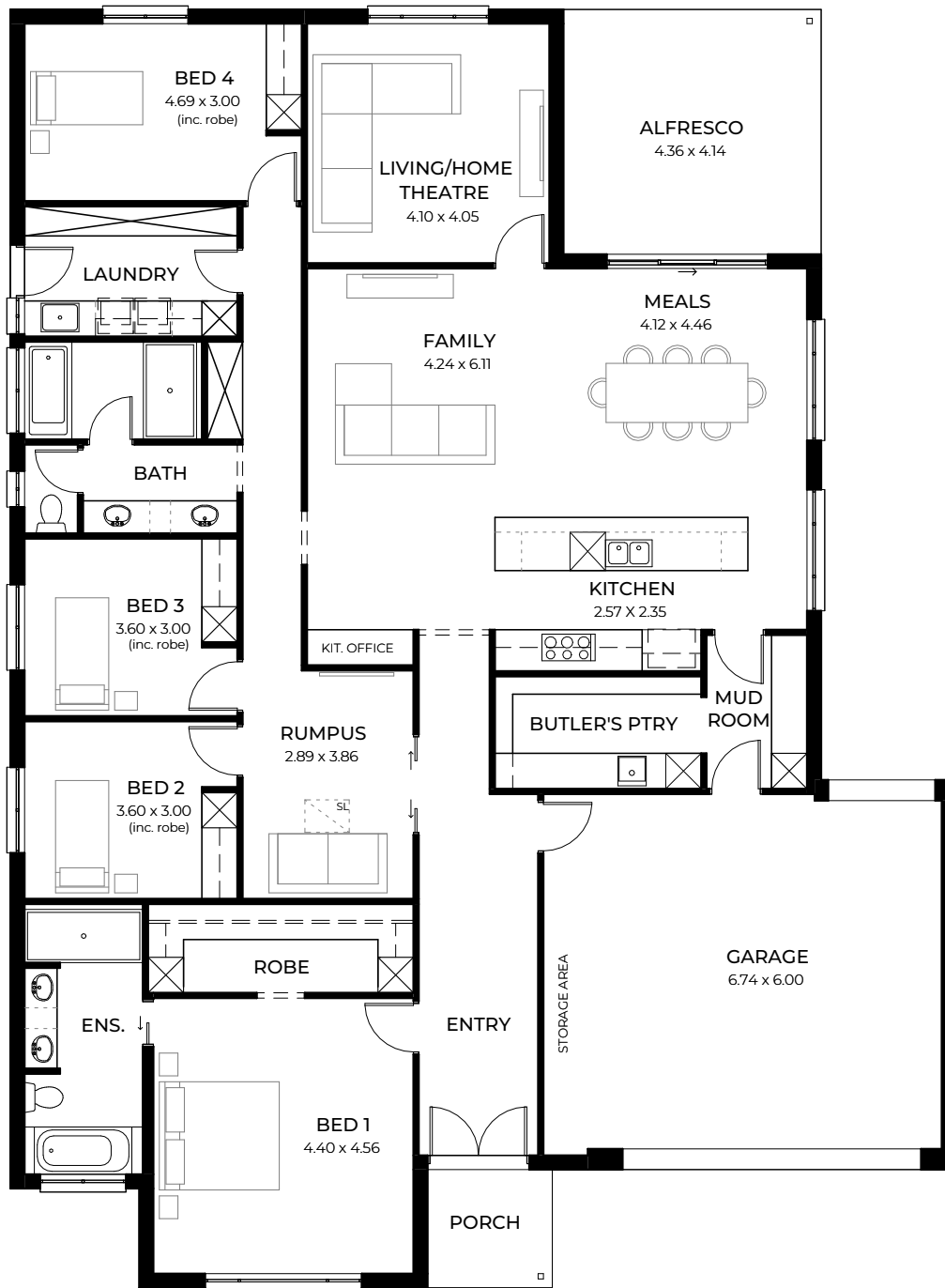


There's space for all in Muse with its sleeping wing and central entertaining spaces. Clever shopper's entry from the car to the butler's pantry, a separated home theatre and family lounge, and a second bath in the clever three-way bathroom.

LIVING	196.65m ²
PORCH	1.90m ²
ALFRESCO	16.02m ²
GARAGE	34.77m ²
WIDTH	15m (incl. garage)
DEPTH	17.70m
TOTAL	249.34m ² / 26.83 sqs

These floorplans, images and facades are for illustration purposes only. All room sizes are approximate. Unauthorised use of these plans constitutes a breach of copyright which may make you personally liable for damages. The industry standard is 20% of the contract sum. E&OE

PURA_3.5



For blocks with a 3.5m set back

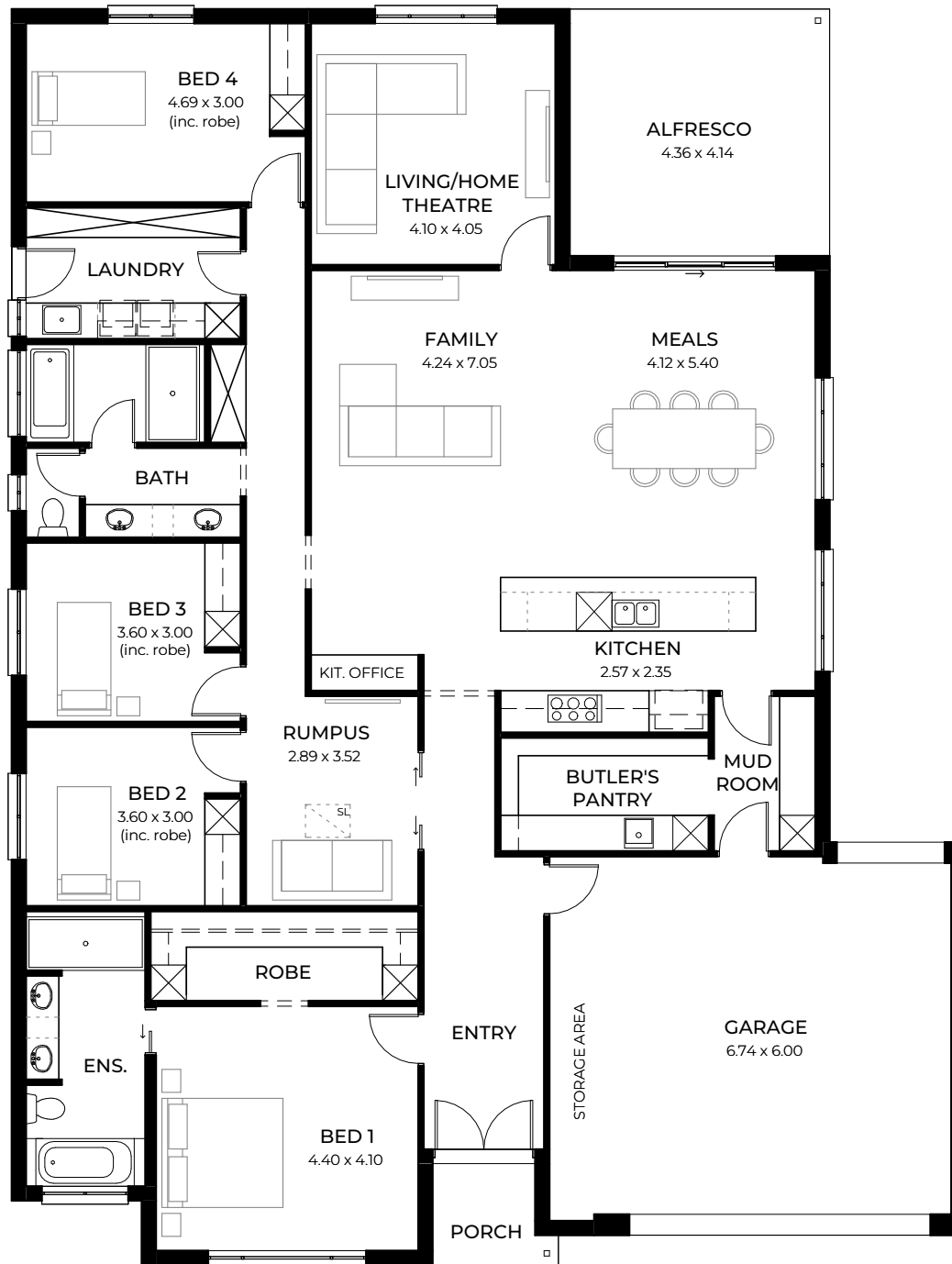


Ultimate in family living, the four-bedroom Pura has a fantastic parent's retreat with glam walk-in robe and luxurious ensuite, rumpus room in the separate bedroom wing and home theatre or second living room off the super-size casual living and designer kitchen.

LIVING	231.72m ²
PORCH	4.22m ²
ALFRESCO	18.05m ²
GARAGE	44.90m ²
WIDTH	16m (incl. garage)
DEPTH	21.62m
TOTAL	298.89m ² / 32.17 sqs

These floorplans, images and facades are for illustration purposes only. All room sizes are approximate. Unauthorised use of these plans constitutes a breach of copyright which may make you personally liable for damages. The industry standard is 20% of the contract sum. E&OE

PURA_5



For blocks with a 5m set back



Style meets functionality with clever storage included in the double garage - which opens into the super-size butler's pantry and mud room - and the all-important laundry. Baths in both bathrooms, and central picture windows bringing beautiful light and ventilation.

LIVING	232.95m ²
PORCH	3.12m ²
ALFRESCO	18.05m ²
GARAGE	45.22m ²
WIDTH	16m (incl. garage)
DEPTH	21.06m
TOTAL	299.34m ² / 32.22 sqs

These floorplans, images and facades are for illustration purposes only. All room sizes are approximate. Unauthorised use of these plans constitutes a breach of copyright which may make you personally liable for damages. The industry standard is 20% of the contract sum. E&OE

DESIGNS TO SUIT

Extra Wide Blocks

Large acreage-style blocks are usually narrow, requiring a thoughtful balance to achieve a free-flowing design with every feature and convenience that takes advantage of its setting and views or maximises the home's street appeal. A spacious, open-plan living hub with a super-size home theatre or teen retreat, alfresco area and kitchen fit for a master chef sits at the heart of Halo.

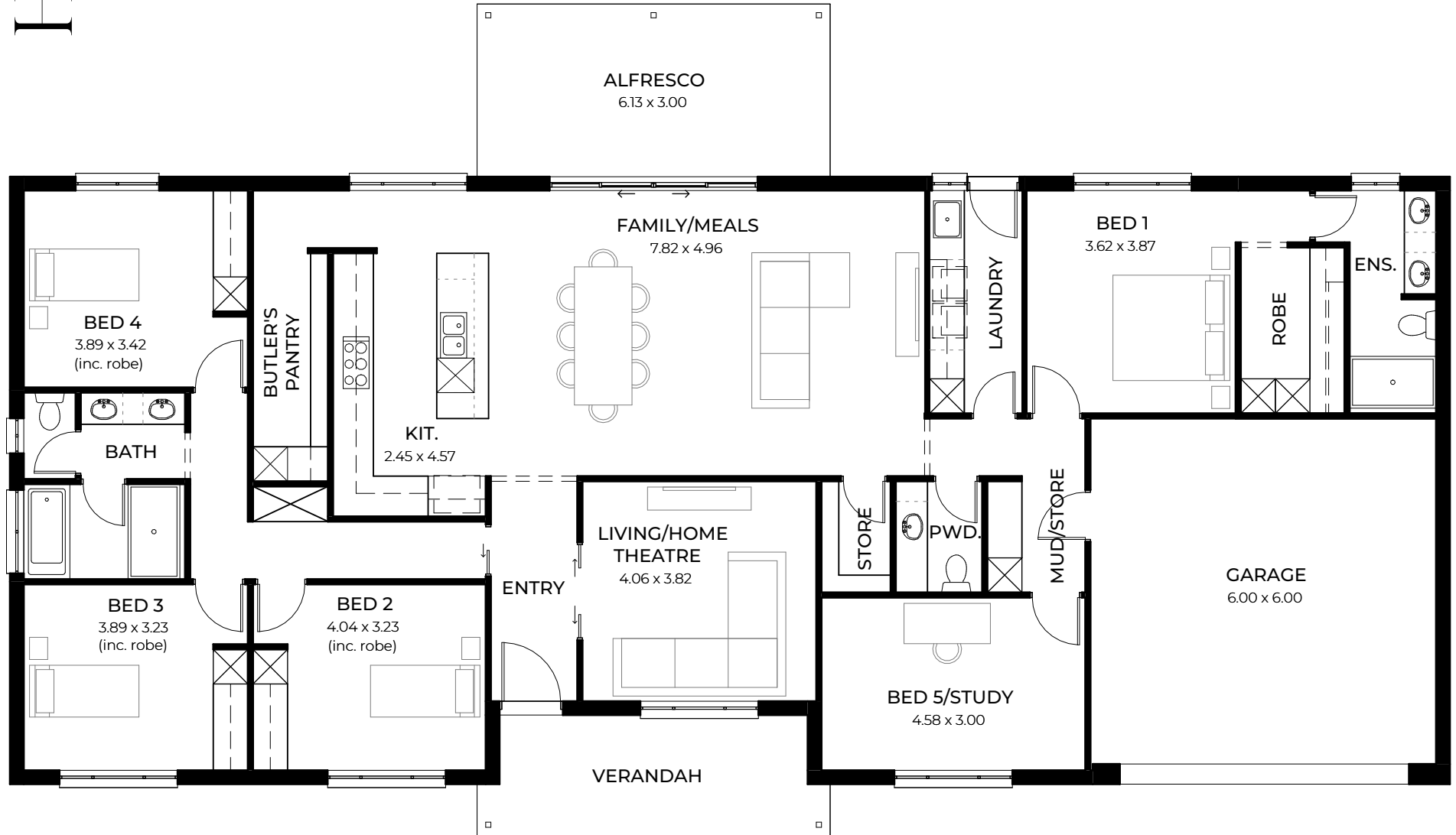


Surrounding the impressive entertaining space are the luxurious master suite plus three bedrooms with robes and extra hallway storage, spacious main bathroom plus extra powder room and a garage conveniently opening into the dual laundry/ mud room.

LIVING	217.71m ²
VERANDAH	11.94m ²
ALFRESCO	18.39m ²
GARAGE	39.62m ²
WIDTH	25m (incl. garage)
DEPTH	14.45m
TOTAL	287.66m ² / 30.96 sqs

These floorplans, images and facades are for illustration purposes only. All room sizes are approximate. Unauthorised use of these plans constitutes a breach of copyright which may make you personally liable for damages. The industry standard is 20% of the contract sum. E&OE

HALO







Inspired Living Elevations

It's the last thing you see when you head off to work, and it welcomes you home after a long day. The right exterior elevation sets the tone for the rest of your house - inside and out - and creates a picture of how you live.

Our Inspired Living Collection has 10 architecturally designed elevations to select from, and each includes statement windows, auto remote-controlled panel-lift garage doors and a mix of colours and materials that will truly complement the interior and deliver maximum street appeal.

ELEVATIONS TO SUIT NARROW BLOCKS



ELEVATIONS TO SUIT NARROW BLOCKS



Designed by
Award-Winning
Architect
Francesco
Bonato

ELEVATIONS TO SUIT WIDER BLOCKS



ELEVATIONS TO SUIT WIDER BLOCKS



STATESMAN
HOMES

To learn more contact us on **8366 0080**
or visit **[statesman-homes.com.au](https://www.statesman-homes.com.au)**

Every reasonable effort has been made to ensure that all information provided in this magazine is correct at the time of printing. All floorplans, images and facades are for illustration purposes only. Some images may contain upgrade items and may not represent standard specifications or inclusions. The information provided in this magazine is to be used as a guide only and Statesman Homes makes no warranties about the accuracy or completeness of the information. This magazine has been prepared for general information purposes only and you should not rely on it for the purposes of making a decision about entering into a contract for the construction of a home or the purchase of land. E&OE BLNG8969 March 2024 © Statesman Homes