

House & Land Package



Brooklyn
15.92
squares

Lot 714 Barbon Lane,
Smithfield Plains 'Playford Alive'

House and Land from only

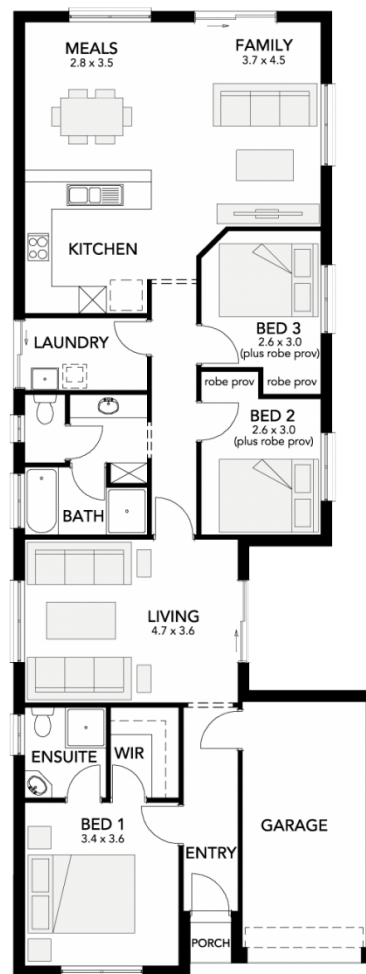
\$251,015*

Specifications

Total: 147.90 sqm
Land Size: 300.00 sqm

You get all this & more...

- Playford Alive Bonus pack valued at \$10k (inc. Front yard landscaping, fencing, crossover to driveway & letterbox).
- LIMITED TIME ONLY: \$10k discount applied to this House & Land Package
- Low deposit loans available
- Portico to front elevation
- Single Garage with auto roller door
- 3 bedrooms, Main with ensuite
- Paved driveway & Perimeter path
- Split system Air conditioner
- 2400mm Ceilings
- Generous footings allowance included
- Soil removal
- Free colorbond roofing upgrade
- Ceiling & external wall insulation
- Built in pantry
- Stainless steel appliances
- Flat extended breakfast bar
- Dishwasher provision with a free dishwasher.
- Tiled wet areas
- Carpets to bedrooms
- Timber flooring to remainder
- NBN provision
- Rainwater bypass system
- Stormwater & much more



STATESMAN
HOMES

Unbeaten
on Price
and Quality

statesman-homes.com.au

Evan Hania

M 0433 974 857

evanh@statesman-homes.com.au

08 8366 0080

*Conditions apply. Certain elevations may not match the particular floor plan published in this package and, as such, all floor plans and elevations are for illustration purposes only. Land subject to availability. The land referred to in this promotion is not owned by us. We make no representation and, to the extent permissible at law, we disclaim all liability, as to the suitability of the land to build on, or the suitability of any house design, or otherwise. You must satisfy yourself of that by inspection, or by taking professional advice, or otherwise. Pricing is indicative only and based on standard costings. Price may vary depending on selections, engineering, council and utility requirements and adjustments to allowances. All packages subject to final council approval. Alan Hickinbotham Pty Ltd ABN 13 007 567 222, RLA 230557. Construction Services Australia Pty Ltd ABN 99 007 641 787, Building Licence G8969.