

House & Land Package



Brooklyn
15.92
squares

Lot 721, 9 Glen Rovala Street,
Brahma Lodge

House and Land from only

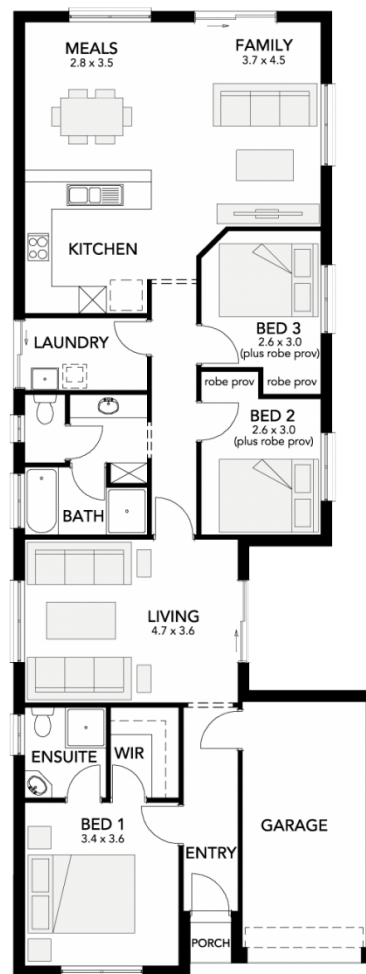
\$300,925*

Specifications

Total: 147.90 sqm
Land Size: 350.00 sqm

You get all this & more...

- Roller door w/ auto unit to garage
- Ducted reverse cycle air conditioning
- Carpet and timber flooring
- Tiling to wet areas
- Ceiling and external wall insulation
- Overhead cupboards to kitchen
- Stainless steel cooktop, oven and rangehood
- Dishwasher provision
- Flat breakfast bar
- Milan semi frameless shower screens
- N.B.N. connection (if applicable)
- Siteworks and footings
- 3 month maintenance period
- 25 year structural guarantee



STATESMAN
HOMES

Unbeaten
on Price
and Quality

statesman-homes.com.au

Michael Metcalfe

M 0409 395 954

michael@statesman-homes.com.au

08 8366 0080

*Conditions apply. Certain elevations may not match the particular floor plan published in this package and, as such, all floor plans and elevations are for illustration purposes only. Land subject to availability. The land referred to in this promotion is not owned by us. We make no representation and, to the extent permissible at law, we disclaim all liability, as to the suitability of the land to build on, or the suitability of any house design, or otherwise. You must satisfy yourself of that by inspection, or by taking professional advice, or otherwise. Pricing is indicative only and based on standard costings. Price may vary depending on selections, engineering, council and utility requirements and adjustments to allowances. All packages subject to final council approval. Alan Hickenbotham Pty Ltd ABN 13 007 567 222, RLA 230557. Construction Services Australia Pty Ltd ABN 99 007 641 787, Building Licence G8969.