

House & Land Package



Evandale
15.37
squares

Lot 59 Spring Avenue,
Salisbury North 'The Green'

House and Land from only

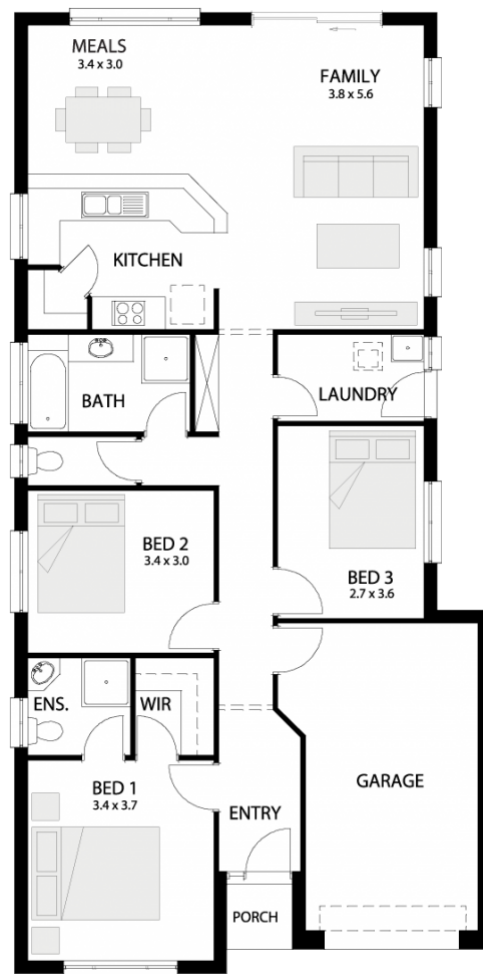
\$268,479*

Specifications

Total: 142.77 sqm
Land Size: 280.00 sqm

You get all this & more...

- Reverse Cycle air-conditioning
- Free whole house termite treatment (50 years Guarantee)
- Actual footing cost
- 18 weeks building time
- 50 years termite free warranty
- Carpet to bedrooms
- Timber floors to rest of house (not wet areas)
- Stainless steel appliances
- Flat breakfast bar
- Color bond roofing included
- Insulation to external walls and ceiling
- Footings included
- NBN provision
- 25-year structural warranty
- 3-month maintenance



STATESMAN
HOMES

Unbeaten
on Price
and Quality

statesman-homes.com.au

Yuki Wang

M 0435 512 921

yukiw@statesman-homes.com.au

08 8366 0080

*Conditions apply. Certain elevations may not match the particular floor plan published in this package and, as such, all floor plans and elevations are for illustration purposes only. Land subject to availability. We make no representation and, to the extent permissible at law, we disclaim all liability, as to the suitability of the land to build on, or the suitability of any house design, or otherwise. You must satisfy yourself of that by inspection, or by taking professional advice, or otherwise. Pricing is indicative only and based on standard costings. Price may vary depending on selections, engineering, council and utility requirements and adjustments to allowances. All packages subject to final council approval. Alan Hickinbotham Pty Ltd ABN 13 007 567 222, RLA 230557. Construction Services Australia Pty Ltd ABN 99 007 641 787, Building Licence G8969.