

House & Land Package



Brooklyn
15.92
squares

Lot 1426 Dufferin Street,
Seaford Meadows

House and Land from only

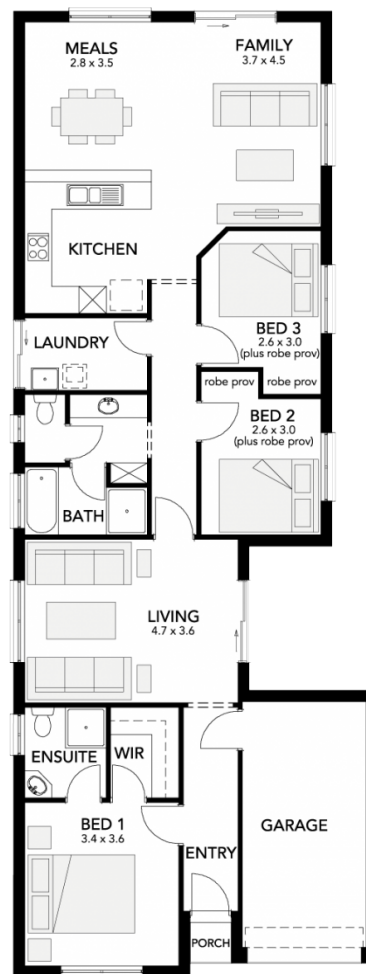
\$299,530*

Specifications

Total: 147.90 sqm
Land Size: 299.00 sqm

You get all this & more...

- Custom Modifications welcome at no extra cost
- Overhead kitchen cupboards
- Retractable rangehood
- Dishwasher Stainless steel appliances
- Flat breakfast Bar
- Insulation to ceilings, walls and garage
- NBN ready
- Carpet to bedrooms
- Timber flooring throughout
- Ducted reverse cycle air conditioning
- Soil Removal and Generous Footings allowance
- Paving to perimeter and driveway
- 3 month maintenance and 25 year structural guarantee
- Depreciation incentives for Investors
- Finance assistance available
- First home owners grant available



STATESMAN
HOMES

Unbeaten
on Price
and Quality

statesman-homes.com.au

Kirsten Millbank

M 0424 151 696

kirstenm@statesman-homes.com.au

08 8366 0080

*Conditions apply. Certain elevations may not match the particular floor plan published in this package and, as such, all floor plans and elevations are for illustration purposes only. Land subject to availability. The land referred to in this promotion is not owned by us. We make no representation and, to the extent permissible at law, we disclaim all liability, as to the suitability of the land to build on, or the suitability of any house design, or otherwise. You must satisfy yourself of that by inspection, or by taking professional advice, or otherwise. Pricing is indicative only and based on standard costings. Price may vary depending on selections, engineering, council and utility requirements and adjustments to allowances. All packages subject to final council approval. Alan Hickinbotham Pty Ltd ABN 13 007 567 222, RLA 230557. Construction Services Australia Pty Ltd ABN 99 007 641 787, Building Licence G8969.