

# House & Land Package



Glenalta  
17.91  
squares

Lot 358 Burke Circuit,  
Penfield 'Eyre'

House and Land from only

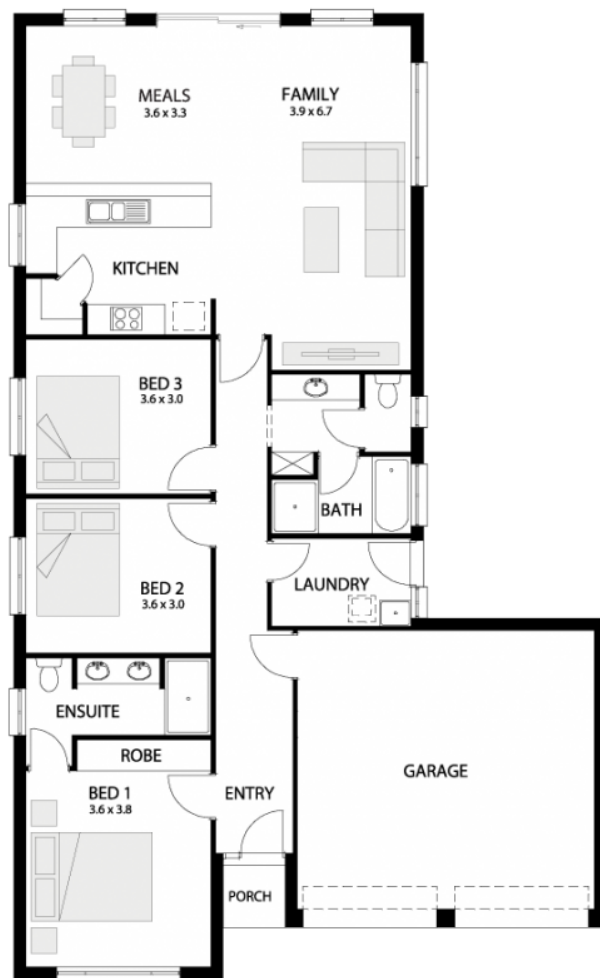
**\$280,406\***

## Specifications

Total: 166.40 sqm  
Land Size: 300.00 sqm

You get all this & more...

- \$10,000 Dollar Discount (apply before 14 October 2018)
- Ducted Reverse Cycle Air conditioning
- 2700mm ceilings
- Panel-Lift Garage Door with Remote Control Unit
- Flooring Provision with Carpets to Bedrooms and Laminate to Remainder.
- Kitchen completed with overhead cupboards and Retractable Rangehood
- Flat Breakfast Bar
- Stainless Steel Appliances
- Ensuite Bathroom to Master Bed
- NBN Provision
- Concrete to Driveway and Perimeter
- Colorbond Roof



**STATESMAN**  
HOMES

Unbeaten  
on Price  
and Quality

[statesman-homes.com.au](http://statesman-homes.com.au)

**Kyle Buchwald**

M 0488 453 482

[kyleb@statesman-homes.com.au](mailto:kyleb@statesman-homes.com.au)

08 8366 0080

\*Conditions apply. Certain elevations may not match the particular floor plan published in this package and, as such, all floor plans and elevations are for illustration purposes only. Land subject to availability. The land referred to in this promotion is not owned by us. We make no representation and, to the extent permissible at law, we disclaim all liability, as to the suitability of the land to build on, or the suitability of any house design, or otherwise. You must satisfy yourself of that by inspection, or by taking professional advice, or otherwise. Pricing is indicative only and based on standard costings. Price may vary depending on selections, engineering, council and utility requirements and adjustments to allowances. All packages subject to final council approval. Alan Hickinbotham Pty Ltd ABN 13 007 567 222, RLA 230557. Construction Services Australia Pty Ltd ABN 99 007 641 787, Building Licence G8969.