

House & Land Package



Brooklyn
15.92
squares

Lot 225 Greenhood Crescent,
Andrews Farm 'Brookmont Estate'

House and Land from only

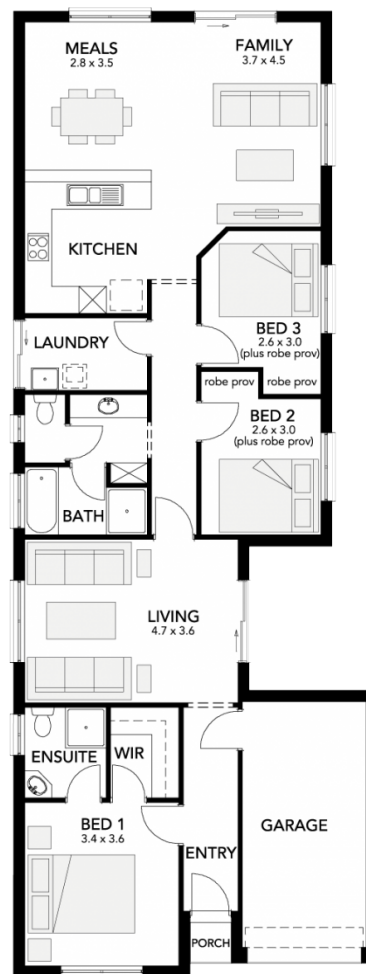
\$275,721*

Specifications

Total: 147.90 sqm
Land Size: 300.00 sqm

You get all this & more...

- 18 Week Build time Eligibility
- Kitchen completed with Dishwasher & overhead cupboards
- Ducted reverse cycle Air conditioning
- 2700mm ceilings
- Roof stormwater to Kerb
- Spacious Walk in robe and ensuite to Master Bed
- Robes to all other bedrooms
- NBN Provision
- Flooring allowance
- Soil Removal and Generous Footings allowance



STATESMAN
HOMES

Unbeaten
on Price
and Quality

statesman-homes.com.au

Kim Nguyen

M 0411 190 906

kimn@statesman-homes.com.au

08 8366 0080

*Conditions apply. Certain elevations may not match the particular floor plan published in this package and, as such, all floor plans and elevations are for illustration purposes only. Land subject to availability. The land referred to in this promotion is not owned by us. We make no representation and, to the extent permissible at law, we disclaim all liability, as to the suitability of the land to build on, or the suitability of any house design, or otherwise. You must satisfy yourself of that by inspection, or by taking professional advice, or otherwise. Pricing is indicative only and based on standard costings. Price may vary depending on selections, engineering, council and utility requirements and adjustments to allowances. All packages subject to final council approval. Alan Hickinbotham Pty Ltd ABN 13 007 567 222, RLA 230557. Construction Services Australia Pty Ltd ABN 99 007 641 787, Building Licence G8969.