



Welcome to
our Vista
display home

FEATURING THE SEACOMBE ALFRESCO



Seacombe Alfresco

26.41
squares

This designer home is so clever. It has four bedrooms including a majestic master suite, a separate living, a contemporary kitchen with a huge walk in pantry, a kitchen office and an under cover alfresco. But the best bit is it all fits on a 14 metre wide block.

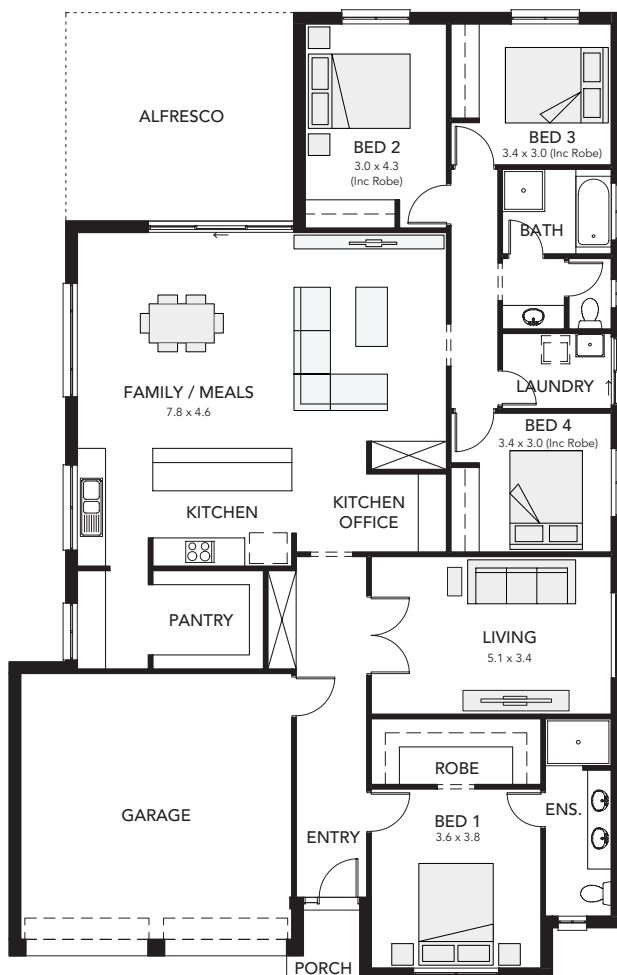
Specifications

Living Area : 185.67 sqm
Porch : 1.98 sqm
Alfresco : 21.35 sqm
Garage : 36.41 sqm
Width : 13.00 m
(inc. double garage)
Depth : 20.50 m
Total : 245.41 sqm

- four bedrooms
- open-plan family & meals area featuring large glass sliding doors
- double garage
- separate living area
- walk-in store room with shelves
- three-way bathroom with separate toilet



Scan the QR code with your phone to explore our locations.



Seacombe Alfresco at
Vista Estate
Espial Street
Seaford Heights

Display village open every
Mon, Wed, Sat and Sun
from 1pm - 5pm

25 North Terrace
Hackney, SA 5069
Phone 8366 0080
info@statesman-homes.com.au
www.statesman-homes.com.au
Builder's Licence No. G8969

This floorplan and elevations are for illustration purposes only. Please refer to the working drawings you receive upon signing a contract for precise measurements. To the extent that there is any conflict between the material contained in this brochure and the contract of sale, the purchaser acknowledges that the terms of the contract of sale will at all times prevail.
© 2021 Statesman Homes. E&OE MARCH 2021.