



STATESMAN
HOMES

Welcome to our Virginia Grove display home

FEATURING THE VIRGINIA ALFRESCO



Virginia Alfresco

30.02
squares

A brilliant home
complete open plan
kitchen, two living areas
and a huge walk in
pantry!

Specifications

Living Area : 210.25 sqm

Verandah : 6.00 sqm

Garage : 39.48 sqm

Alfresco : 23.25 sqm

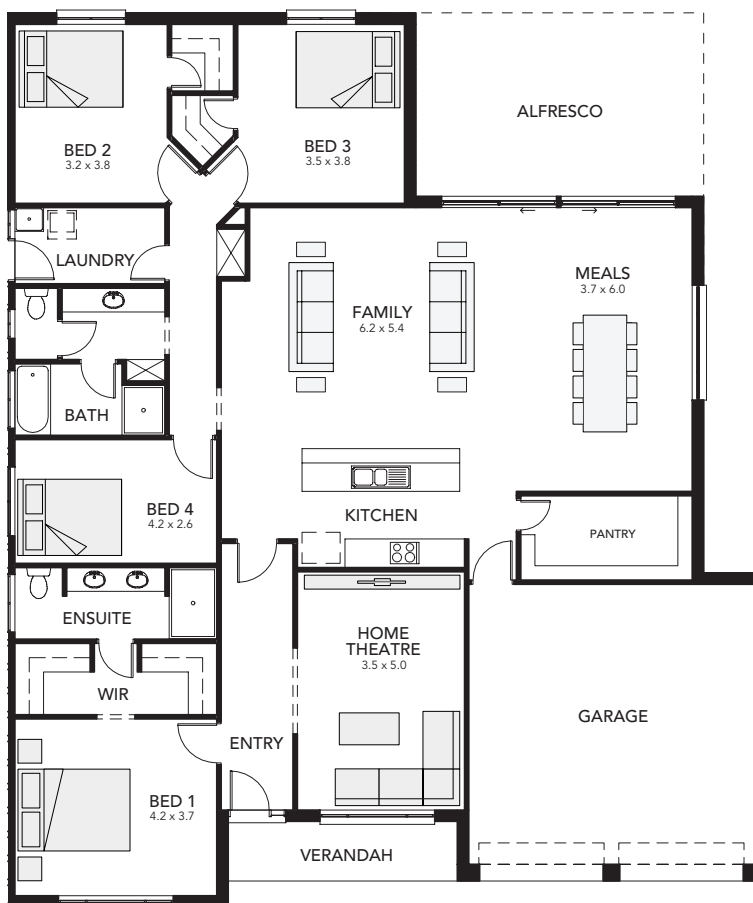
Width : 16.00m

(inc. double garage)

Depth : 18.78m

Total : 278.98 sqm

- four bedrooms
- open-plan family & meals area
featuring large glass sliding doors
- double garage
- separate living area
- walk-in pantry room with shelves
- three-way bathroom with
separate toilet



25 North Terrace
Hackney, SA 5069
Phone 8366 0080
info@statesman-homes.com.au
www.statesman-homes.com.au
Builder's Licence No. G8969

Virginia Alfresco
on display at

Virginia Grove
Juniper Boulevard
Virginia

Display village open every
Monday, Wednesday,
Saturday and Sunday
from 1pm - 5pm

These floorplans and elevations are for illustration purposes only. Please refer to the working drawings you receive upon signing a contract for precise measurements. To the extent that there is any conflict between the material contained in this brochure and the contract of sale, the purchaser acknowledges that the terms of the contract of sale will at all times prevail. © 2016 Statesman Homes. E&OE 4.11.16

© Unauthorised use of these plans constitutes a breach of copyright which will make you personally liable for damages. The industry standard is 20% of the contract sum.