



**STATESMAN
HOMES**

Welcome to our Emerald Way display home

FEATURING THE KIDMAN



Kidman

17.34
squares

A beautiful open plan casual area with a spacious designer kitchen and a separate living room overlooking a courtyard makes a fresh design for modern living!

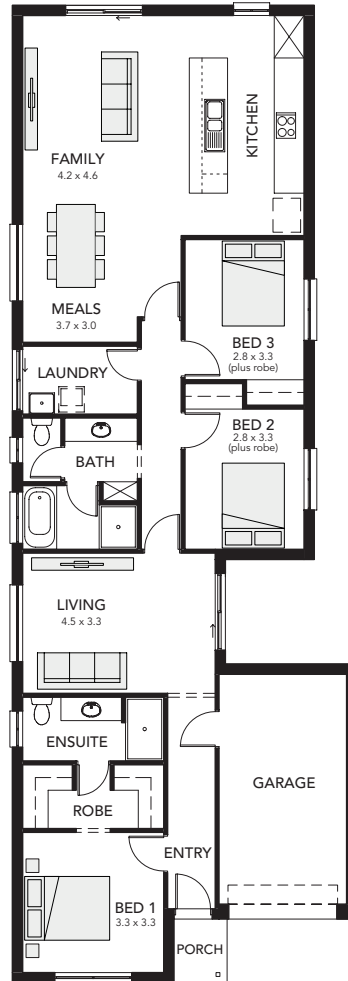
Specifications

Living Area : 139.76 sqm
 Porch : 1.88 sqm
 Garage : 19.44 sqm
 Width : 8.10 m
 (inc. single garage)
 Depth : 23.00 m
 Total : 161.08 sqm

- Three bedrooms.
- Open-plan family & meals area featuring glass sliding doors.
- Separate living room.
- Three-way bathroom with separate toilet.



Scan the QR code with your phone to explore our locations.



Kidman at
 Emerald Way,
 Mount Barker

Display village open every
 Mon, Wed, Sat and Sun
 from 1pm - 5pm

25 North Terrace
 Hackney, SA 5069
 Phone 8366 0080
info@statesman-homes.com.au
www.statesman-homes.com.au
 Builder's Licence No. G8969

This floorplan and elevations are for illustration purposes only. Please refer to the working drawings you receive upon signing a contract for precise measurements. To the extent that there is any conflict between the material contained in this brochure and the contract of sale, the purchaser acknowledges that the terms of the contract of sale will at all times prevail. © 2024 Statesman Homes. E&OE February 2024.